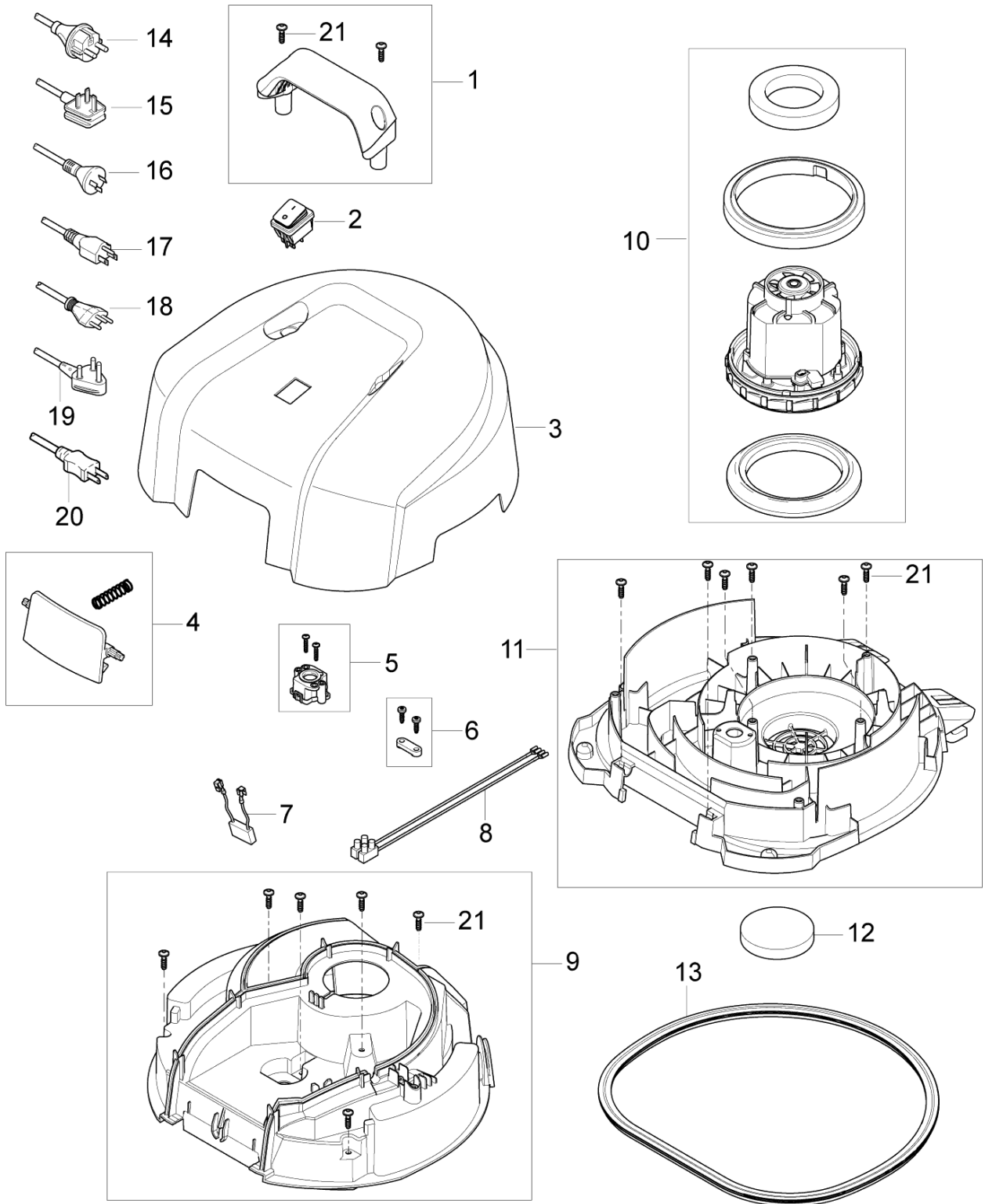


MAXXI II - Spare parts

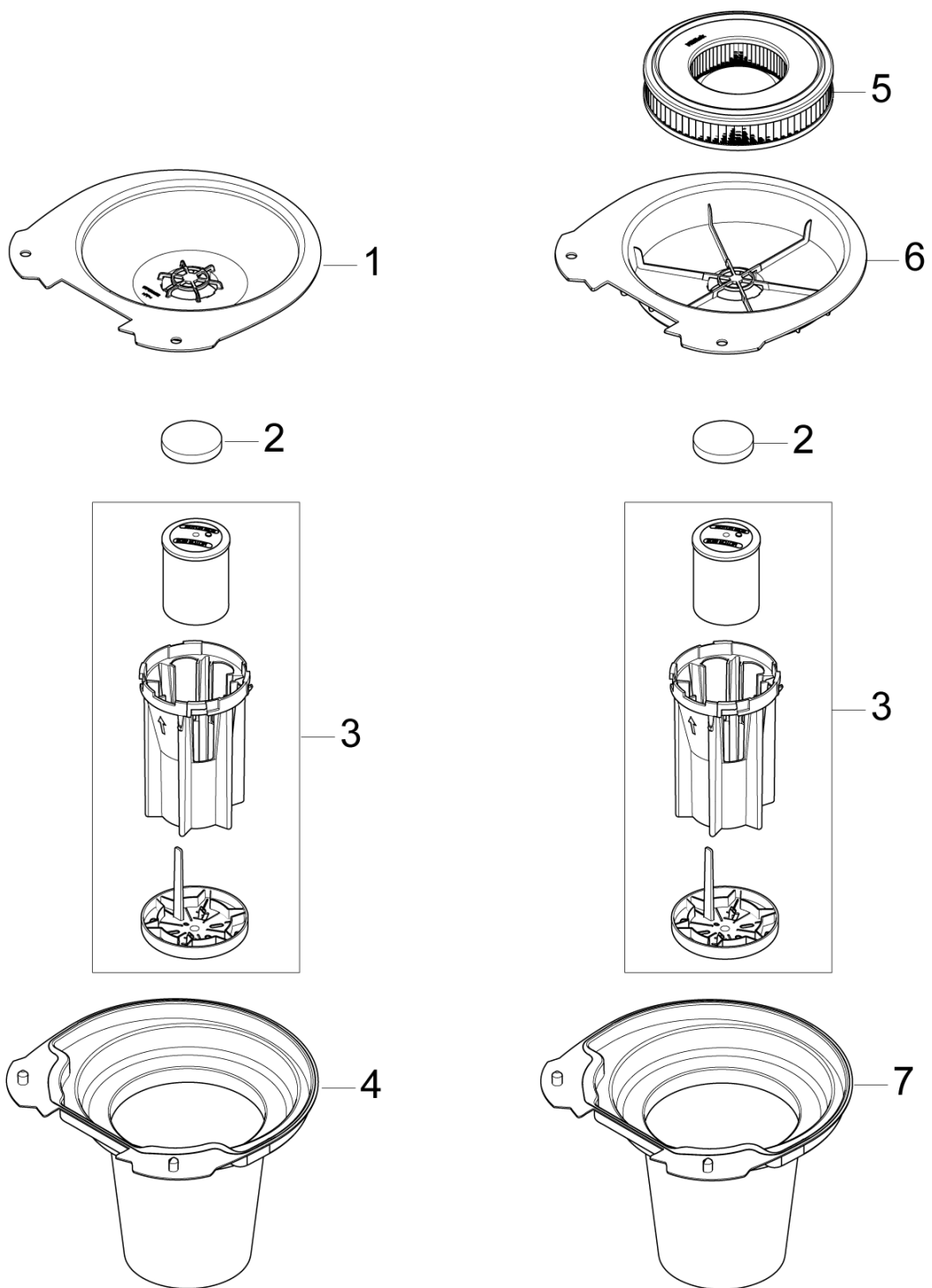


TABLE OF CONTENTS

Top 35.....	4
Filter and bags 35.....	6
Container 35.....	8
Accessories 35.....	10
Top 55-1, 75-1.....	12
Container 55 BSF, BDF.....	14
Container 75 BSF, BDF.....	16
Filter and bags 55, 75.....	18
Squeegee Accessory.....	20
Recommended Spare Parts.....	22
Accessories.....	24



No.	Part No.	Qty.	Description	Part Note
0	107410810	1	PACKAGING VL500/MAXXI 35 - KIT	
1	107407234	1	HANDLE F. 35L BIN MAXXI	
2	107404540	1	SWITCH 0-1 DOUBLE POLE SET	
3	107407306	1	HOOD 35L MAXXI	
4	107407236	1	CLAMP F. 75-55-35 L BIN MAXXI	
5	107407237	1	VACUUM VALVE CPL.	
6	140 6560 500	1	ANTI STRAIN CLIP	
7	48338	1	ANTI-INTERFERENCE CAPACITOR	
8	140 7042 500	1	WIRE INTERNAL FOR GWD 300	
9	107407238	1	CLAMPINGPLATE 35L	
10	302003384	1	MOTOR KIT 1200W 230V	
10	302003388	1	MOTOR KIT 1000W 120V	
11	107407240	1	BASEPLATE 35L 1 MOTOR MAXXI	
12	140 8682 500	1	MOTOR FILTER	
13	107407241	1	GASKET F. BASEPLATE 35L	
14	12222501	1	CORD SET EU L 10M	
15	12222503	1	CORD SET UK L 10M	
16	12222506	1	CORD SET AU/NZ L 10M	
17	107401614	1	CORD SET US/TW 3C 15.5M YELLOW	
18	12222507	1	CORD SET CH L 10M	
19	107407242	1	POWER CORD H05VV-F 2X1.00 SABS 164-1 16A	
20	140 6702 500	1	CORD SET JP 15.5M	
21	302003704	8	SCREW EJOT DELTA PT50X18WN1451	



FILTER AND BAGS 35

MAXXI II - 35 - Clarke

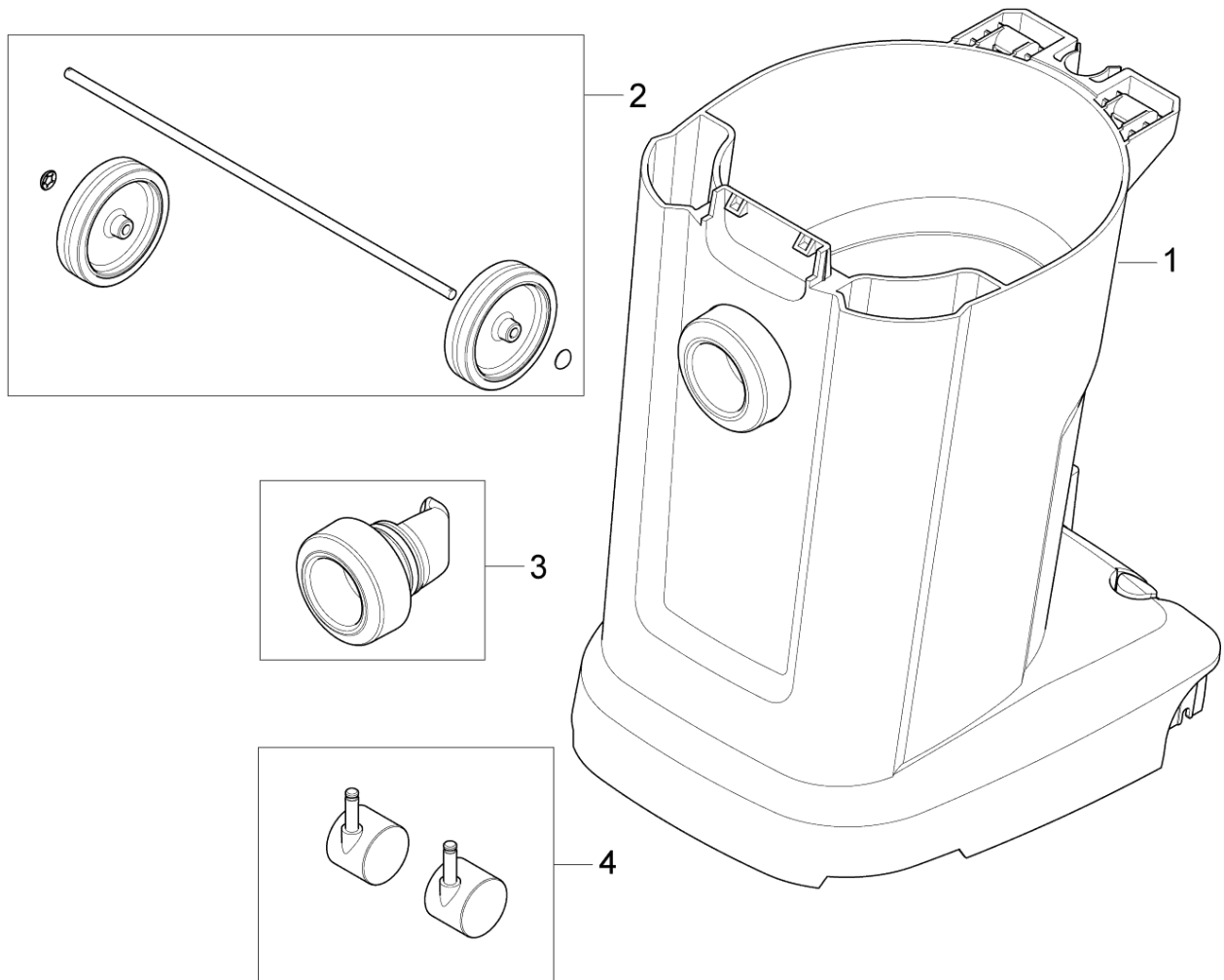
2014.07.14

2016.04.18

No.	Part No.	Qty.	Description	Part Note
1	107407295	1	FLOATER ADAPTER 35L	[1]
2	140 8682 500	1	MOTOR FILTER	
3	140 8680 500	1	FLOAT BASKET	
4	107407296	1	SACK FILTER	[1]
5	107407297	1	CARTRIDGE FILTER	[2]
5	107409006	1	HEPA CARTRIDGE FILTER	[3]
6	107407298	1	DRYFILTER BOX 35L	[2]
7	107407299	1	WET FILTER	[2]

Part Notes:

- [1] - BSF
- [2] - BDF, EDF
- [3] - Option



CONTAINER 35

MAXXI II - 35 - Clarke

2014.07.14

2016.04.18

No.	Part No.	Qty.	Description	Part Note
1	107407257	1	CONTAINER WITH TROLLEY 35L MAXXI	
2	140 8446 500	1	REAR WHEEL KIT	
3	107407259	1	INLET ROUND MAXXI	
4	140 6422 500	1	WHEELS LINK 50MM	



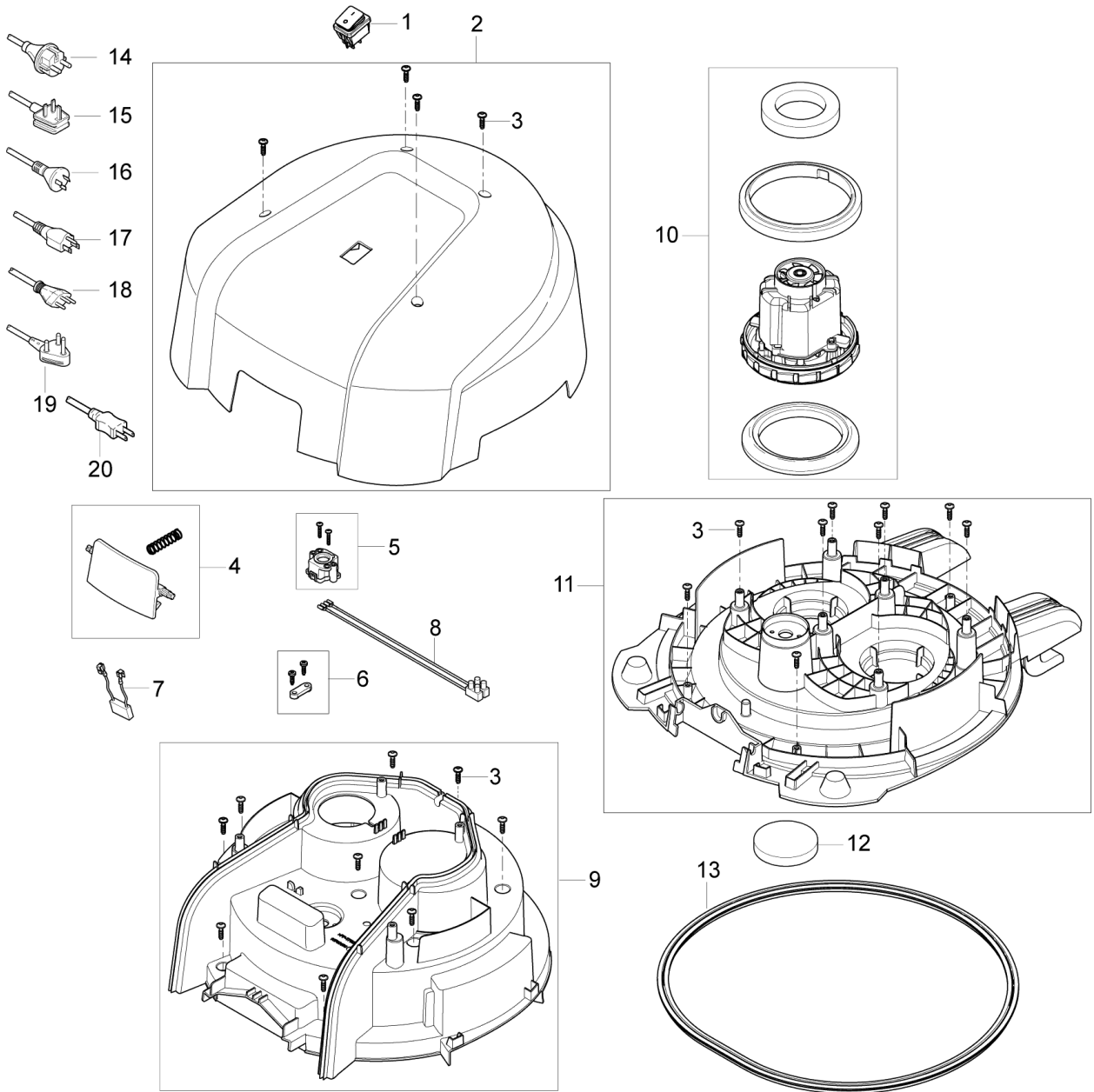
ACCESSORIES 35

MAXXI II - 35 - Clarke

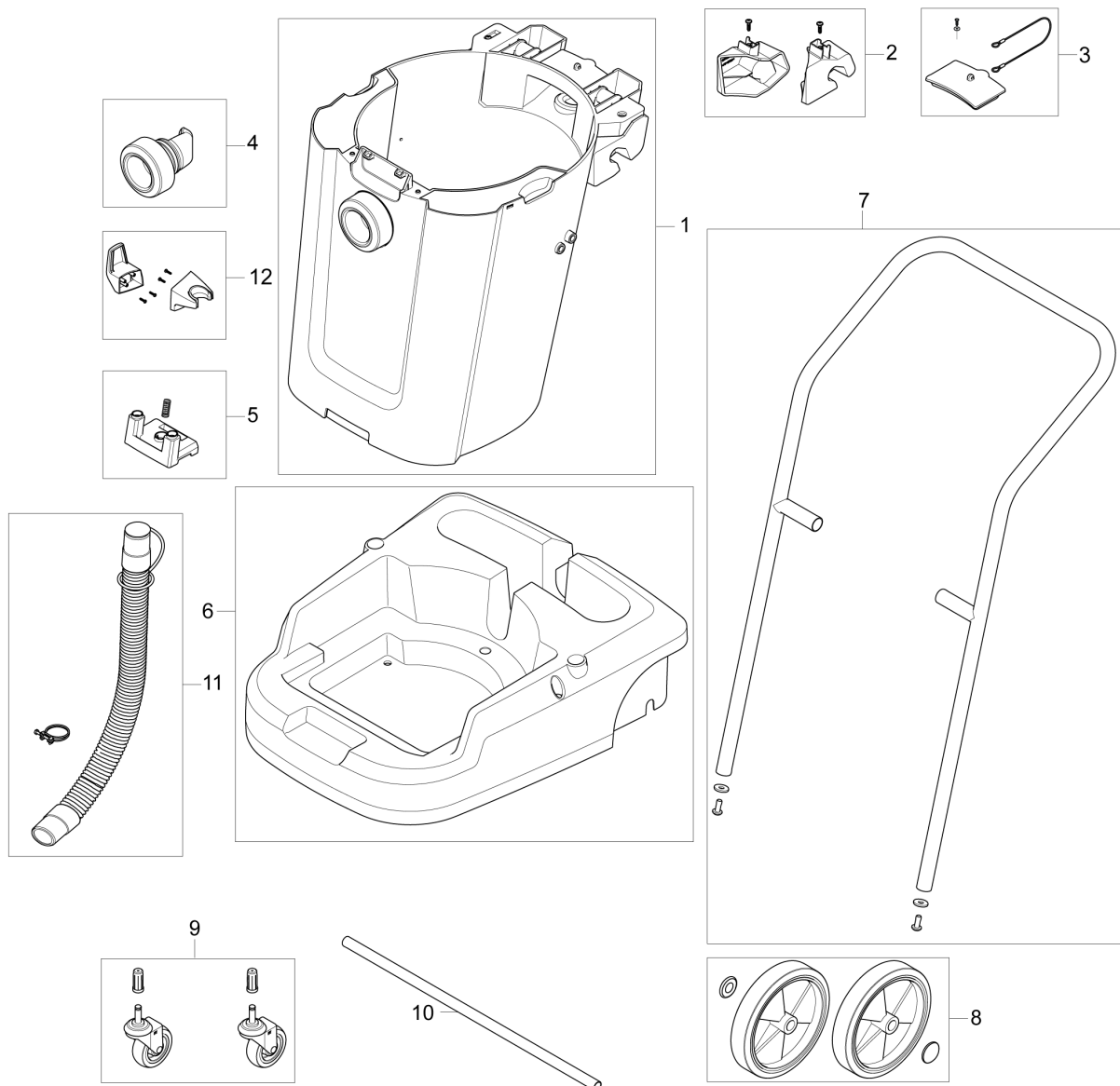
2014.07.14

2016.04.18

No.	Part No.	Qty.	Description	Part Note
1	302004004	1	FLEECE FILTER BAG 5 PCS ATTIX 40/50	
2	107407308	1	HOSE D32 1.9M CPL	
3	107407310	1	FLOOR NOZZLE D32 RUBBER STRIP	
3	107407311	1	FLOOR NOZZLE D32 BRUSH	
4	107407309	2	EXTENSION TUBE D32 - SS	
5	107407334	1	CREVICE NOZZLE D32	
6	107407312	1	BRUSH NOZZLE D32	
7	107408801	1	PUMP KIT - VL500 220/240V	



No.	Part No.	Qty.	Description	Part Note
0	107410812	1	PACKAGING VL500 75 ERGO - KIT	
0	107410811	1	PACKAGING VL500 55 ERGO - KIT	
1	140 9537 500	1	SWITCH TWO POLE KIT	
2	107407244	1	HOOD 75-55L 1 SWITCH MAXXI	
3	302003704	13	SCREW EJOT DELTA PT50X18WN1451	
4	107407236	1	CLAMP F. 75-55-35 L BIN MAXXI	
5	107407237	1	VACUUM VALVE CPL.	
6	140 6560 500	1	ANTI STRAIN CLIP	
7	48338	1	ANTI-INTERFERENCE CAPACITOR	
8	140 7042 500	1	WIRE INTERNAL FOR GWD 300	
9	107407246	1	CLAMPING PLATE 55-75-1 VMAXXI	
10	302003388	1	MOTOR KIT 1000W 120V	
10	302003384	1	MOTOR KIT 1200W 230V	
10	302004006	1	MOTOR 1200W/100V JP W.GASKET	
11	107407248	1	BASEPLATE 75-55L 1 MOTOR MAXXI	
12	140 8682 500	1	MOTOR FILTER	
13	107407249	1	GASKET F. BASEPLATE 75-55L	
14	12222501	1	CORD SET EU L 10M	
15	140 8262 020	1	CORD SET BLACK 10.5M UK-PLUG	
16	140 8262 010	1	CORD SET 10.5 M AU PLUG	
17	107401614	1	CORD SET US/TW 3C 15.5M YELLOW	
18	12222507	1	CORD SET CH L 10M	
19	107407242	1	POWER CORD H05VV-F 2X1.00 SABS 164-1 16A	
20	140 6702 500	1	CORD SET JP 15.5M	



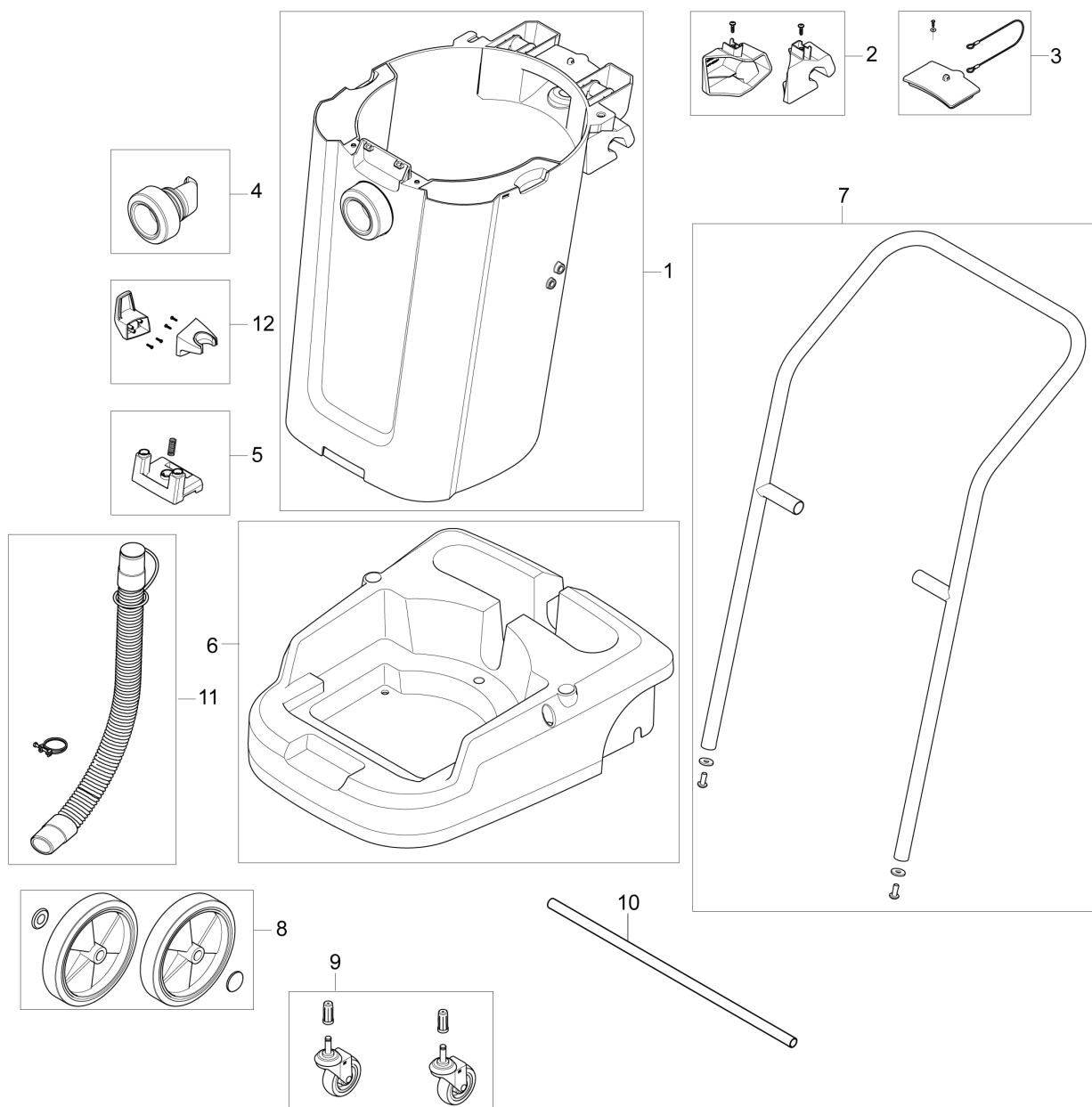
CONTAINER 55 BSF, BDF

MAXXI II - Clarke

2013.03.26

2016.04.18

No.	Part No.	Qty.	Description	Part Note
1	107407261	1	CONTAINER 55L MAXXI	
2	107407264	1	BRACKET LEFT-RIGHT F. 55L MAXXI	
3	107407266	1	SPOUT CAP	
4	107407259	1	INLET ROUND MAXXI	
5	107407268	1	PUSH-BUTTON F. EASY-TILT 55L MAXXI	
6	107407270	1	FRAME F. BASIC TROLLEY MAXXI	
7	107407271	1	HANDLE F. BASIC TROLLEY VL500	
8	140 9543 500	1	REAR WHEEL	
9	140 5476 500	1	WHEEL LINK TROLLEY 2-P	
10	107407272	1	WHEEL D200MM WITH AXLE	
11	107407273	1	DRAINHOSE F. 55L BIN	
12	107408912	1	CABLE HOOK AND TUBE HOLDER MAXXI	



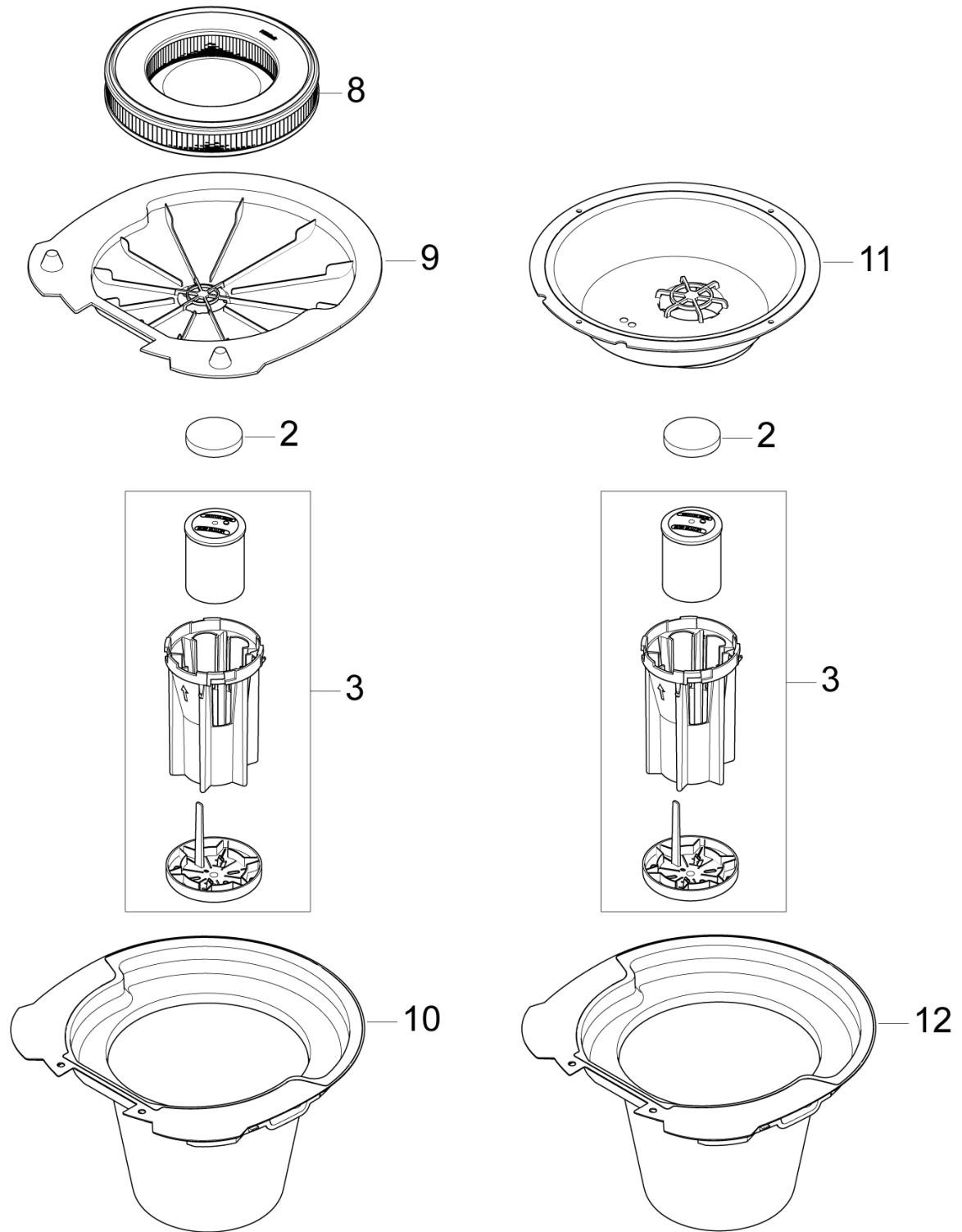
CONTAINER 75 BSF, BDF

MAXXI II - Clarke

2013.03.26

2016.04.18

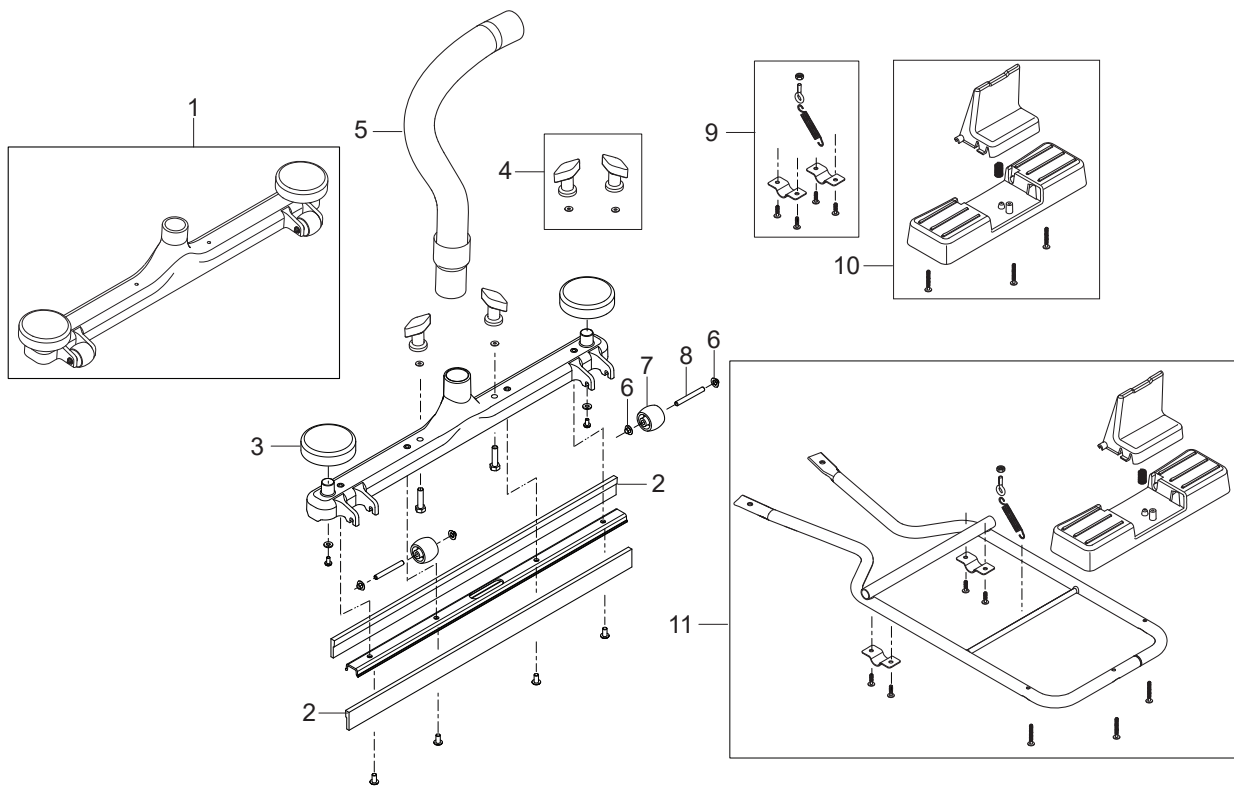
No.	Part No.	Qty.	Description	Part Note
1	107407275	1	CONTAINER 75L MAXXI	
2	107407278	1	BRACKET LEFT-RIGHT F. 75L	
3	107407266	1	SPOUT CAP	
4	107407259	1	INLET ROUND MAXXI	
5	107407281	1	PUSH-BUTTON F. EASY-TILT 75L MAXXI	
6	107407270	1	FRAME F. BASIC TROLLEY MAXXI	
7	107407282	1	HANDLE F. BASIC TROLLEY 75L	
8	140 9543 500	1	REAR WHEEL	
9	140 5476 500	1	WHEEL LINK TROLLEY 2-P	
10	107407272	1	WHEEL D200MM WITH AXLE	
11	107407307	1	DRAINHOSE F. 75L BIN	
12	107408912	1	CABLE HOOK AND TUBE HOLDER MAXXI	



No.	Part No.	Qty.	Description	Part Note
2	140 8682 500	1	MOTOR FILTER	
3	140 8680 500	1	FLOAT BASKET	
8	107407300	1	CARTRIDGE FILTER	[1]
8	107409007	1	HEPA CARTRIDGE FILTER	[2]
9	107407301	1	DRYFILTER BOX	[1]
10	107407302	1	WET FILTER	[1]
11	107407303	1	FLOATER ADAPTER 55-75L	[3]
12	107407304	1	SACK FILTER	[3]

Part Notes:

- [1] - BDF, EDF
- [2] - Option
- [3] - BSF



SQUEEGEE ACCESSORY

MAXXI II - Clarke

2018.02.01

2016.04.18

No.	Part No.	Qty.	Description	Part Note
0	107407050	1	SQUEEGEE COMPLETE BLACK	
1	56209088	1	SQUEEGEE ASSEMBLY 24	
2	56105533	2	BLADE BLUE FOR 24 E00601	
3	56209157	2	BUMPER SIDE ROLLER	
4	140 7947 500	1	NUT THUMB 5/16	
5	107408917	1	HOSE FOR SQUEEGEE	
6	56009132	4	NUT PUSH CAP 1/4	
7	56329554	2	ROLLER	
8	56209150	2	AXLE ROLLER	
9	107408918	1	MOUNTING KIT FOR SQUEEGEE	
10	107408915	1	PEDAL FOR SQUEEGEE BLACK	
11	107411346	1	FRAMEKIT FOR SQUEEGEE NOZZLE JET BLACK	

**No
Diagram
Available**

**Parts List
Only**

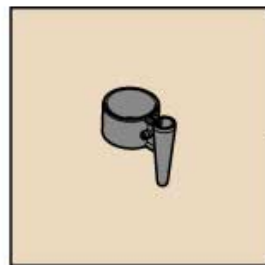
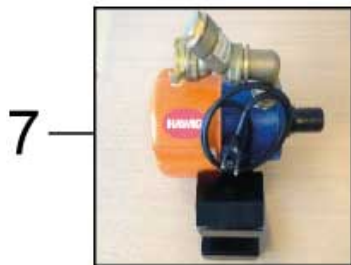
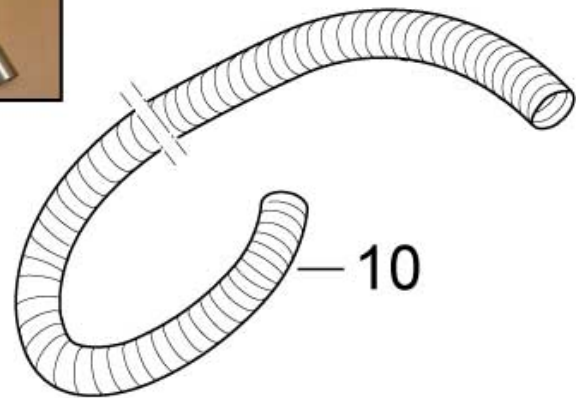
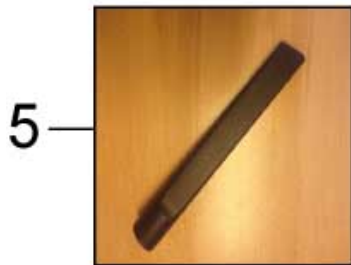
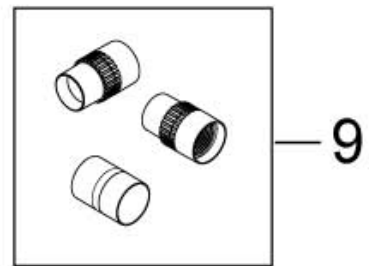
RECOMMENDED SPARE PARTS

MAXXI II - Clarke

2014.11.27

2013.04.02

No.	Part No.	Qty.	Description	Part Note
	107407249	1	GASKET F. BASEPLATE 75-55L	
	107407266	1	SPOUT CAP	
	107407281	1	PUSH-BUTTON F. EASY-TILT 75L MAXXI	
	107407307	1	DRAINHOSE F. 75L BIN	
	302003388	1	MOTOR KIT 1000W 120V	
	107407301	1	DRYFILTER BOX	
	107407273	1	DRAINHOSE F. 55L BIN	
	107407303	1	FLOATER ADAPTER 55-75L	
	140 5476 500	1	WHEEL LINK TROLLEY 2-P	
	107407236	1	CLAMP F. 75-55-35 L BIN MAXXI	
	48338	1	ANTI-INTERFERENCE CAPACITOR	
	140 8682 500	1	MOTOR FILTER	
	107407278	1	BRACKET LEFT-RIGHT F. 75L	
	302003384	1	MOTOR KIT 1200W 230V	
	140 9537 500	1	SWITCH TWO POLE KIT	
	107407268	1	PUSH-BUTTON F. EASY-TILT 55L MAXXI	
	107407302	1	WET FILTER	
	107407300	1	CARTRIDGE FILTER	
	107407304	1	SACK FILTER	
	107407259	1	INLET ROUND MAXXI	
	107407237	1	VACUUM VALVE CPL.	
	140 8680 500	1	FLOAT BASKET	
	12222501	1	CORD SET EU L 10M	



No.	Part No.	Qty.	Description	Part Note
1	302002892	1	FLEECE FILTER BAG PU 5 PCS	[1]
2	107407336	1	HOSE D40 2.5M CPL	
3	107407338	1	FLOOR NOZZLE D40 RUBBER STRIP	
3	107407339	1	FLOOR NOZZLE D40 BRUSH	
3	107416577	1	HARDFLOOR NOZZLE 400MM x Ø40MM - KIT	
4	107407337	2	EXTENSION TUBE D40 - SS	
5	107408850	1	CREVICE NOZZLE D40	
7	107408801	1	PUMP KIT - VL500 220/240V	
8	107407335	1	TUBEHOLDER D40	
9	20001810	1	HOSE EXTENSION KIT Ø50	[2]
10	11984	1	HOSE UNIVERSAL Ø50 EVA PER METRE	[2]

Part Notes:

- [1] - 55 and 75
 [2] - See 99900100 Instructions for hose extension kit

Clarke[®]

USA

Nilfisk, Inc.
9435 Winnetka Ave N
Brooklyn Park
Minnesota
MN- 55442
Telephone: +1 800 989 2235

Canada

Nilfisk Canada
240 Superior Boulevard Mississauga, ON L5T 2L2
Telephone: 905-564-1149