

---

# Clarke®

## Vantage 17 Battery / Cable



**Service Manual**



## TABLE OF CONTENTS

<b>GENERAL INFORMATION</b> .....	<b>3</b>
GENERAL INFORMATION.....	3
MACHINE LIFTING .....	3
MACHINE TRANSPORTATION.....	3
OTHER REFERENCE MANUALS.....	3
SAFETY .....	3
GENERAL SAFETY PRECAUTIONS .....	4
GROUNDING INSTRUCTIONS.....	6
TECHNICAL DATA .....	7
<b>MAINTENANCE</b> .....	<b>8</b>
SCHEDULED MAINTENANCE .....	8
SCHEDULED MAINTENANCE TABLE [Vantage 17 Battery].....	8
SCHEDULED MAINTENANCE TABLE [Vantage 17 Cable].....	8
INTEGRITY CHECK OF POWER SUPPLY CABLE AND EXTENSION.....	8
MACHINE NOMENCLATURE .....	9
<b>SOLUTION SYSTEM</b> .....	<b>14</b>
SOLUTION TANK CLEANING [Vantage 17 Battery - Cable].....	14
SOLUTION FILTER CLEANING [Vantage 17 Battery - Cable].....	14
SOLUTION FLOW CONTROL TAP OR SOLENOID VALVE DISASSEMBLY/ASSEMBLY [Vantage 17 Battery - Cable].....	15
TROUBLESHOOTING [Vantage 17 Battery - Cable].....	16
<b>BRUSHING SYSTEM</b> .....	<b>17</b>
BRUSH MOTOR ELECTRICAL INPUT CHECK [Vantage 17 Battery].....	17
BRUSH MOTOR ELECTRICAL INPUT CHECK [Vantage 17 Cable].....	19
BRUSH MOTOR CARBON BRUSH CHECK AND REPLACEMENT [Vantage 17 Battery] .....	21
BRUSH MOTOR AND REDUCTION UNIT DISASSEMBLY/ASSEMBLY [Vantage 17 Battery] .....	22
BRUSH MOTOR AND REDUCTION UNIT DISASSEMBLY/ASSEMBLY [Vantage 17 Cable] .....	23
TROUBLESHOOTING [Vantage 17 Battery] .....	24
TROUBLESHOOTING [Vantage 17 Cable] .....	24
<b>RECOVERY WATER SYSTEM</b> .....	<b>25</b>
TANK AND VACUUM GRID WITH FLOAT CLEANING [Vantage 17 Battery - Cable].....	25
VACUUM SYSTEM MOTOR ELECTRICAL INPUT CHECK [Vantage 17 Battery - Cable].....	26
VACUUM SYSTEM MOTOR CARBON BRUSH CHECK AND REPLACEMENT [Vantage 17 Battery - Cable].....	28
VACUUM SYSTEM MOTOR DISASSEMBLY/ASSEMBLY [Vantage 17 Battery - Cable].....	29
SQUEEGEE DISASSEMBLY/ASSEMBLY [Vantage 17 Battery - Cable] .....	30
SQUEEGEE CLEANING/CHECK AND BLADE REPLACEMENT [Vantage 17 Battery - Vantage 17 Cable].....	30
TROUBLESHOOTING [Vantage 17 Battery] .....	31
TROUBLESHOOTING [Vantage 17 Battery - Cable] .....	31

<b>OTHER SYSTEMS</b> .....	<b>32</b>
MACHINE SPEED ADJUSTMENT [Vantage 17 Battery - Vantage 17 Cable].....	32
BRUSH/PAD-HOLDER DECK DISASSEMBLY/ASSEMBLY [Vantage 17 Battery] .....	33
BRUSH/PAD-HOLDER DECK DISASSEMBLY/ASSEMBLY [Vantage 17 Cable] .....	34
<b>ELECTRICAL SYSTEM</b> .....	<b>36</b>
(WET OR GEL) BATTERY REMOVAL/INSTALLATION AND SETTING	
[Vantage 17 Battery] .....	36
CHARGING CURVES SETTING [Vantage 17 Battery] .....	38
ELECTRONIC BOARD SETTING [Vantage 17 Battery].....	38
BATTERY CHARGING [Vantage 17 Battery].....	39
ELECTRONIC BOARD REPLACEMENT [Vantage 17 Battery] .....	41
FUSE CHECK/REPLACEMENT [Vantage 17 Battery] .....	43
COMPONENT LOCATION [Vantage 17 Battery].....	44
COMPONENT LOCATION [Vantage 17 Cable].....	46
WIRING DIAGRAM [Vantage 17 Battery] .....	47
WIRING DIAGRAM [Vantage 17 Cable] .....	51
EB1 ELECTRONIC BOARD CONNECTIONS [Vantage 17 Battery].....	52

# GENERAL INFORMATION

## GENERAL INFORMATION

### CONVENTIONS

**NOTE**

*Forward and backward, front and rear, left and right are intended with reference to the operator's position.*

### MACHINE LIFTING

**WARNING!**

*Do not work under the lifted machine without supporting it with safety stands.*

### MACHINE TRANSPORTATION

**WARNING!**

*Before transporting the machine, make sure that:*

- All doors and cases are closed*
- The battery connector, if present, is disconnected*
- The machine is securely fastened to the means of transport*

### OTHER REFERENCE MANUALS

The following manuals are available at Clarke Literature Service Department:

Vantage 17 Battery Instructions for Use - Form Number 909 6772 000

Vantage 17 Battery Installation Instruction for Battery charger kit- Form Number 9097052000

Vantage 17 Battery - Vantage 17 Cable Installation Instructions for Rubber shock absorber kit - Form Number 909 6227 000

Vantage 17 Cable Instructions for Use - Form Number 909 6773 000

## SAFETY

Clarke uses the following symbols to indicate potentially dangerous situations. Always read this information carefully and take all necessary precautions to safeguard people and property.

**DANGER!**

*It indicates a dangerous situation with risk of death for the operator.*

**WARNING!**

*It indicates a potential risk of injury for people or damage to objects.*

**CAUTION!**

*It indicates a remark related to important or useful functions.*

*Pay careful attention to the paragraphs marked by this symbol.*

**NOTE**

*It indicates a caution or a remark related to important or useful functions.*

**CONSULTATION**

*It indicates the necessity to refer to the User Manual before performing any procedure.*

## GENERAL INFORMATION

### GENERAL SAFETY PRECAUTIONS

Description of potential damages to people and machine.

**DANGER!**

[Vantage 17 Battery - Cable]

- *This machine must be used by properly trained operators only. Children or disabled people cannot use this machine.*
- *Do not wear jewelry when working near electrical components.*
- *Do not operate the machine near toxic, dangerous, flammable and/or explosive powders, liquids or vapors: This machine is not suitable for collecting dangerous powders.*
- *During battery charging, remove the recovery tank and perform this procedure in well-ventilated areas and away from bare flames.*

**DANGER!**

[Vantage 17 Battery]

- *Before performing any maintenance, repair, cleaning or replacement procedure, turn the main switch to "0" and, if necessary, disconnect the battery.*
- *When using lead (WET) batteries, keep sparks, flames and incandescent materials away from the batteries. During normal operation, explosive gases are released.*
- *When using lead (WET) batteries, battery charging produces highly explosive hydrogen gas. During battery charging, remove the recovery water tank and perform this procedure in well-ventilated areas and away from open flames.*

**DANGER!**

[Vantage 17 Cable]

- *Before performing any maintenance, repair, cleaning or replacement procedure disconnect the plug from the electrical mains.*

## GENERAL INFORMATION

**WARNING!****[Vantage 17 Battery - Cable]**

- *Do not leave the machine unattended without being sure that it cannot move independently.*
- *Always protect the machine against the sun, rain and bad weather, both under operation and inactivity condition. Store the machine indoors, in a dry place: This machine must be used in dry conditions, it must not be used or kept outdoors in wet conditions.*
- *Before using the machine, close all doors and/or covers.*
- *Do not allow to be used as a toy. Close attention is necessary when used near children.*
- *Use only as shown in this Manual. Use only Advance recommended accessories.*
- *Take all necessary precautions to prevent hair, jewelry and loose clothes from being caught by the machine moving parts.*
- *Do not leave the machine unattended without being sure that it cannot move independently.*
- *While using this machine, take care not to cause damage to people or objects.*
- *Do not bump into shelves or scaffoldings, especially where there is a risk of falling objects.*
- *Do not put any can containing fluids on the machine.*
- *The machine working temperature must be between +32°F and +104°F (0°C and +40°C).*
- *The machine storage temperature must be between +32°F and +104°F (0°C and +40°C).*
- *The humidity must be between 30% and 95%.*
- *When using floor cleaning detergents, follow the instructions on the labels of the detergent bottles.*
- *To handle floor cleaning detergents, wear suitable gloves and protections.*
- *Do not use the machine as a means of transport.*
- *Do not use the machine on incline.*
- *Do not allow the brushes to operate while the machine is stationary to avoid damaging the floor.*
- *In case of fire, use a powder fire extinguisher, not a water one.*
- *Do not tamper with the machine safety guards and follow the ordinary maintenance instructions scrupulously.*
- *Do not allow any object to enter into the openings. Do not use the machine if the openings are clogged. Always keep the openings free from dust, hairs and any other foreign material which could reduce the air flow.*
- *Do not remove or modify the plates affixed to the machine.*
- *This machine cannot be used on roads or public streets.*
- *Pay attention during machine transportation when temperature is below freezing point. The water in the recovery tank or in the hoses could freeze and seriously damage the machine.*
- *Use the brushes and pads supplied with the machine and those specified in the Instructions for Use Manual. Using other brushes or pads could reduce safety.*
- *In case of machine malfunctions, ensure that these are not due to lack of maintenance. Otherwise, request assistance from the authorized personnel or from an authorized Service Center.*
- *If parts must be replaced, require ORIGINAL spare parts from an Otherwise Dealer or Retailer.*
- *To ensure machine proper and safe operation, the scheduled maintenance shown in the relevant chapter of this Manual, must be performed by the authorized personnel or by an authorized Service Center.*
- *Carefully read all the instructions before performing any maintenance/repair procedure.*
- *Do not wash the machine with direct or pressurized water jets, or with corrosive substances.*
- *The machine must be disposed of properly, because of the presence of toxic-harmful materials (batteries, etc.), which are subject to standards that require disposal in special centers (see Scrapping chapter).*

**WARNING!****[Vantage 17 Battery]**

- *Before using the battery charger, ensure that frequency and voltage values, indicated on the machine serial number plate, match the electrical mains voltage.*
- *Do not pull or carry the machine by the battery charger cable and never use the battery charger cable as a handle. Do not close a door on the battery charger cable, or pull the battery charger cable around sharp edges or corners. Do not run the machine on the battery charger cable. Keep the battery charger cable away from heated surfaces.*
- *Do not charge the batteries if the battery charger cable or the plug are damaged. If the machine is not working as it should, has been damaged, left outdoors or dropped into water, return it to the Service Center.*
- *To reduce the risk of fire, electric shock, or injury, do not leave the machine unattended when it is plugged in. Before performing any maintenance procedure, disconnect the battery charger cable from the electrical mains.*
- *Do not smoke while charging the batteries.*

## GENERAL INFORMATION

**WARNING!**

[Vantage 17 Cable]

- *The machine power supply cable is grounded and the relevant plug is grounded too. In case of machine malfunction or breakdown, grounding connection reduces the risk of electric shock.*
- *The power supply cable plug must be connected to an appropriate outlet, which is grounded according to law in force.*
- *Improper connection can cause electric shock. Consult a qualified technician to make sure that the outlet is properly grounded.*
- *Do not tamper with the power supply cable plug. If the power supply cable plug cannot be connected to the outlet, have new grounded outlet installed by a qualified technician, according to the law in force.*
- *Before connecting the power supply cable to the electrical mains, check that frequency and voltage, shown on the machine serial number plate (7), match the electrical mains voltage.*
- *Do not unplug the machine by pulling the supply cable. To unplug, grasp the plug, not the cable.*
- *Do not handle the plug or the machine with wet hands.*
- *Turn off all controls before unplugging.*
- *Regularly check the power supply cable for damages, cracks, cuts and wear. If necessary, replace it.*
- *If the power supply cable is damaged, it must be replaced by an authorized Service Center.*
- *To avoid any risk, if the power supply cable is damaged, contact an authorized Advance Service Center or a qualified technician.*
- *Do not pull or carry the machine by the power supply cable and never use the power supply cable as a handle. Do not close a door on the power supply cable, or pull the power supply cable around sharp edges or corners. Do not run the machine on the power supply cable.*
- *The brushes must not come into contact with the power supply cable.*
- *Keep the power supply cable away from heated surfaces.*
- *To reduce the risk of fire, electric shock, or injury, do not leave the machine unattended when it is plugged in. Disconnect the machine from the electrical mains when not in use and before performing maintenance procedures.*
- *If the machine*
  - *does not work properly*
  - *is damaged*
  - *has water or foam leaks*
  - *has been left outdoors exposed to bad weather conditions*
  - *is wet or has been dropped into water**turn it off immediately and contact the authorized Advance Service Center or a qualified technician.*

## GROUNDING INSTRUCTIONS

This machine is equipped with a grounding system. If the machine has a malfunction or an electrical failure, the grounding system reduces the risk of electric shock. This Machine is equipped with a power supply cable with grounding cable and plug with grounding connection.

The plug must be inserted in proper electrical mains equipped with a grounding system according to the Law in force.

**WARNING:**

*Improper connections can cause electric shock. Ask a technician to check if the electrical plug to be used is equipped with a grounding connection. Do not modify the plug of the machine. If it is not possible to connect the plug of the machine to the electrical mains, have a qualified technician install a proper electrical mains equipped with a grounding system, according to the Law in force.*

## Extension

Use the extension supplied with the machine or an extension of identical electrical characteristics.



GENERAL INFORMATION

TECHNICAL DATA

Model	Vantage 17 Battery	Vantage 17 Cable 115 V	Vantage 17 Cable 230 V
Working Voltage	24 V	115 V	230 V
Standard Batteries (Quantity: 2)	12V 80 Ah, GEL	-	-
Drive Speed	Determined by brush rotation		
Battery Protection System	Low Voltage Cut-Off of Brush and Solution	-	-
Vacuum Motor	0.44 hp (330 W)	0.74 hp (550 W, 60 Hz)	0.74 hp (550 W, 50 Hz)
Vacuum System Capacity	41.5 in H <sub>2</sub> O (1,055 mm H <sub>2</sub> O)	51.8 in H <sub>2</sub> O (1,316 mm H <sub>2</sub> O)	
Solution Tank Capacity	8.2 gal (31 liters)		
Solution Flow (min/max)	0.08/0.26 gal/min (0.3/1.0 liters/min)		
Recovery Tank Capacity	7.9 gal (30 liters)		
Squeegee	Straight		
Squeegee Width	28.3 in (720 mm)		
Cleaning Width	17 in (430 mm)		
Brush/Pad Motor	0.7 hp (520 W)	0.74 hp (550 W, 60 Hz)	1.47 hp (1100 W, 50 Hz)
Brush/Pad Diameter	17 in (430 mm)		
Brush/Pad Rotation Speed	135 RPM	150 RPM	170 RPM
Brush/Pad On-Floor Pressure (with Full Tank)	50.6 lbs (23 kg)	61.6 lbs (28 kg)	
Central Wheels on Fixed Axle Diameter	9.8 in (250 mm)		
Pivoting Wheel (diameter)	1.9 in (49 mm)		
Wheel Pressure on the Ground*	52.2 psi (0.36 N/mm <sup>2</sup> )	33.3 psi (0.23 N/mm <sup>2</sup> )	
On-Board Battery Charger	24V D.C., 8 Amp., 115-230V, 50-60 Hz	-	-
Maximum Floor Inclination	2%		
Machine Length	44 in (1120 mm)		
Machine Width (without Squeegee)	22.4 in (570 mm)		
Machine Height	43.5 in (1105 mm)		
Machine Weight with Batteries, Brush and Full Solution Tank (Working Condition)	346.1 lbs (157 kg)	217.2 lbs (98.5 kg)	
Sound Pressure Level (at the Operator's Position)	67 dB(A)	76 dB(A)	71 dB(A)
Battery Compartment Size (Length x Width x Height)	13.8x13.8x10.2 in (350x350x260 mm)	-	

(\*) the machines is tested in the following conditions:

- max size battery
- max size brush deck / squeegee
- solution tank full
- optionals installed
- weight verified on each wheel
- print area verified on concrete for each wheel
- result expresses as max. value for front and max value for rear wheels

## GENERAL INFORMATION

### MAINTENANCE

#### SCHEDULED MAINTENANCE

The lifespan of the machine and its maximum operating safety are ensured by correct and regular maintenance.



See the **GENERAL INFORMATION** and **SAFETY** paragraphs.

Provided below is the Scheduled Maintenance Table. The intervals shown may vary according to particular working conditions, which are to be defined by the person in charge of the maintenance.

For instructions on maintenance procedures, see the following paragraphs.

#### SCHEDULED MAINTENANCE TABLE [Vantage 17 Battery]

Procedure	Daily or after using the machine	Weekly	Every six months	Yearly
Squeegee cleaning				
Brush cleaning				
Tank and vacuum grid with float cleaning				
Battery charging				
Squeegee blade check (and replacement)				
Solution filter cleaning				
Battery (WET) fluid level check				
Screw and nut tightening check			(1)	
Brush motor carbon brush check or replacement				
Vacuum system motor carbon brush check or replacement				

(1): and after the first 8 working hours

#### SCHEDULED MAINTENANCE TABLE [Vantage 17 Cable]

Procedure	Daily or after using the machine	Weekly	Every six months	Yearly
Squeegee cleaning				
Brush cleaning				
Tank and vacuum grid with float cleaning				
Squeegee blade check (and replacement)				
Solution filter cleaning				
Screw and nut tightening check			(1)	
Vacuum system motor carbon brush check or replacement				

(1): and after the first 8 working hours

#### INTEGRITY CHECK OF POWER SUPPLY CABLE AND EXTENSION

Carefully check if the power supply cable, the extension and the plugs are worn or damaged. If necessary, have them replaced by the Service Center.

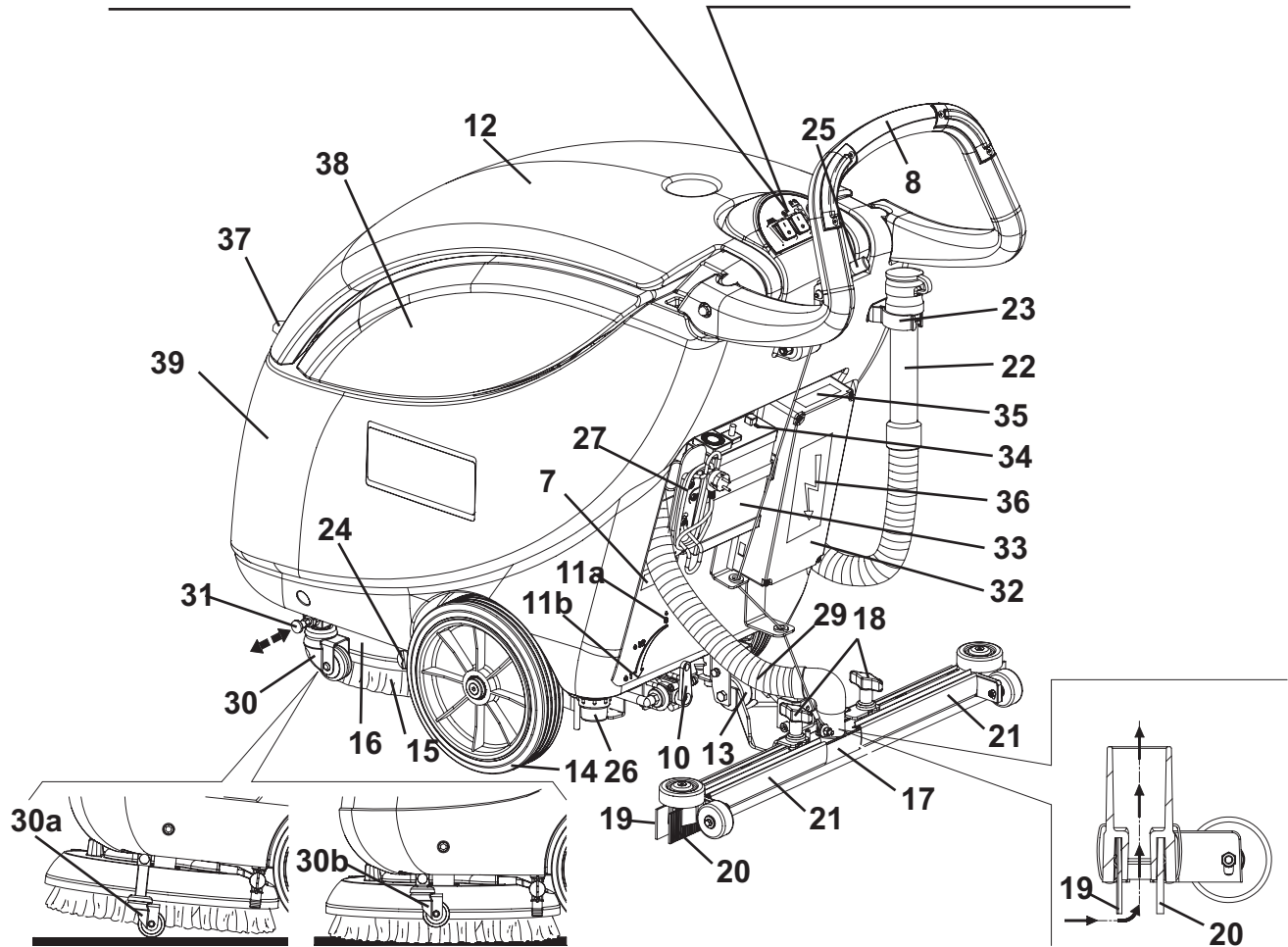
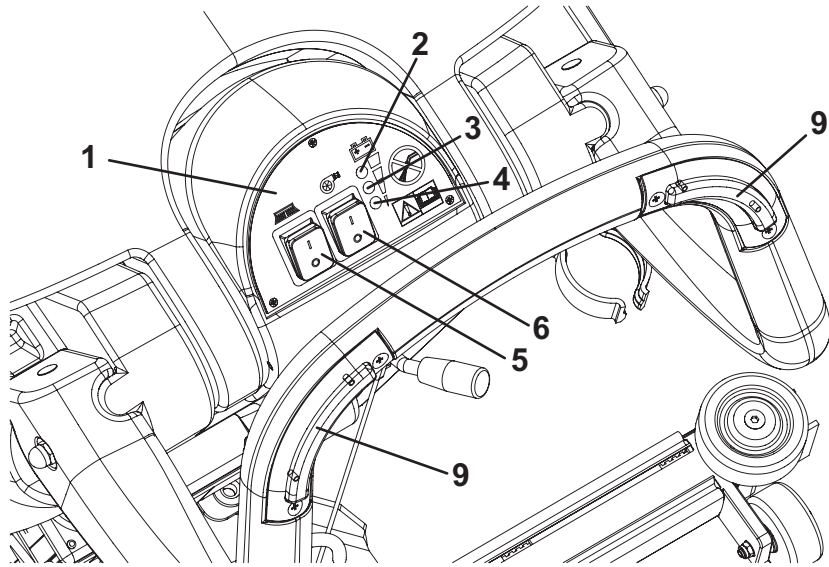
**GENERAL INFORMATION****MACHINE NOMENCLATURE**

In this Manual, numbers in brackets – for example: (2) - refer to the components shown in the nomenclature pages. Refer to these pages whenever it is necessary to identify a component mentioned in the text.

- |  |   |
|--|---|
| 1. Control panel   | 36. [B] Warning label                         |
| 2. [B] Charged battery warning light (green)                         | 37. Bumper roller for squeegee                |
| 3. [B] Half-discharged battery warning light (yellow)                | 38. Recovery water tank                       |
| 4. [B] Discharged battery warning light (red)                        | 39. Solution tank                             |
| 5. Brush/pad switch  | 40. Compensation hole                         |
| 6. Vacuum switch   | 41. Recovery water tank cover (open)          |
| 7. Serial number plate/technical data                                | 42. Recovery water tank cover gasket          |
| 8. Handlebar   | 43. Recovery water tank                       |
| 9. Brush activation switches   | 44. Solution tank                             |
| 10. Solution flow control lever                                      | 45. Bumper roller for brush/pad-holder deck   |
| 11a. Solution flow control lever ECO position.                       | 46. Vacuum grid with automatic shut-off float |
| 11b. Maximum solution flow   | 47. Recovery water drain hole                 |
| 12. Recovery water tank cover  | 48. Vacuum motor                              |
| 13. Rear support wheel for transport/parking                         | 49. Brush/pad-holder motor                    |
| 14. Central wheels on fixed axle                                     | 50. [B] Batteries                             |
| 15. Brush/pad-holder with pad  | 51. [B] Battery installation diagram          |
| 16. Brush/pad-holder deck  | 52. Brush/pad-holder deck                     |
| 17. Squeegee   | 53. Machine speed adjustment screw            |
| 18. Squeegee fixing handwheels                                       | 54. Brush                                     |
| 19. Front squeegee blade   | 55. Pad-holder                                |
| 20. Rear squeegee blade  | 56. Pad                                       |
| 21. Squeegee blade fixing springs                                    | 57. Right deck fastening screw                |
| 22. Recovery water drain hose  | 58. Left deck fastening screws                |
| 23. Recovery water drain hose bracket                                | 59. [C] Terminal board box                    |
| 24. Solution drain valve   | 60. Cover stand (applied)                     |
| 25. Squeegee lifting/lowering lever                                  |   |
| 26. Solution filter  | [B]: Installed on Vantage 17 Battery          |
| 27. [B] Battery charger-electrical mains connecting cable (optional) | [C]: Installed Vantage 17 Cable               |
| 28a. [C] Power supply cable  |   |
| 28b. [C] Power supply cable extension                                |   |
| 28. Squeegee vacuum hose   |   |
| 29. Transport/parking device   |   |
| 30a. Transport/parking device activated                              |   |
| 30b. Transport/parking device deactivated                            |   |
| 31. Locking pin for transport/parking device                         |   |
| 32. [C] Electrical component box                                     |   |
| 33. [B] Battery charger  |   |
| 34. [B] Battery charger warning lights                               |   |
| 35. [B] Battery installatin diagram                                  |   |

# GENERAL INFORMATION

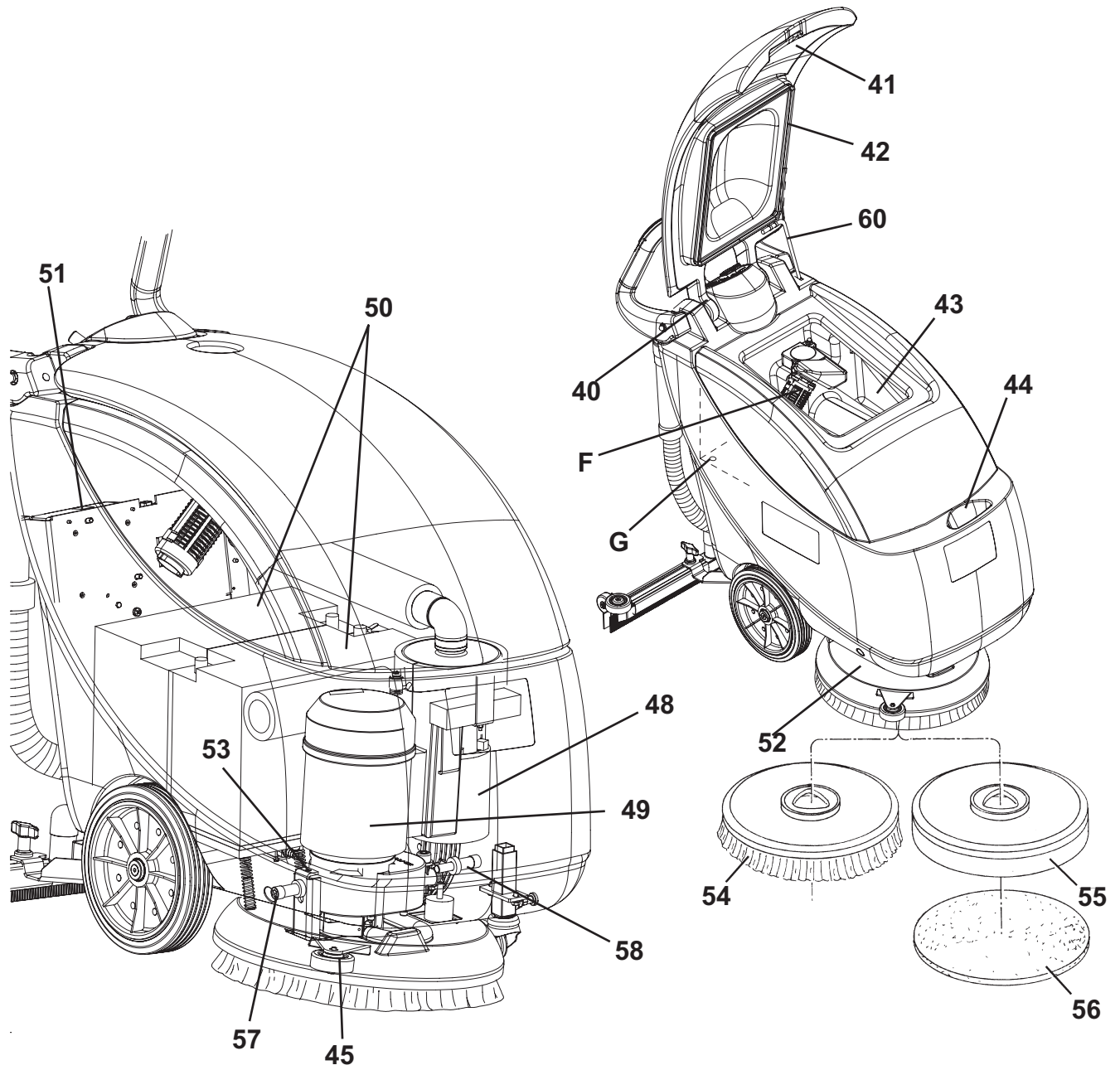
## VANTAGE 17 BATTERY



S301386C

GENERAL INFORMATION

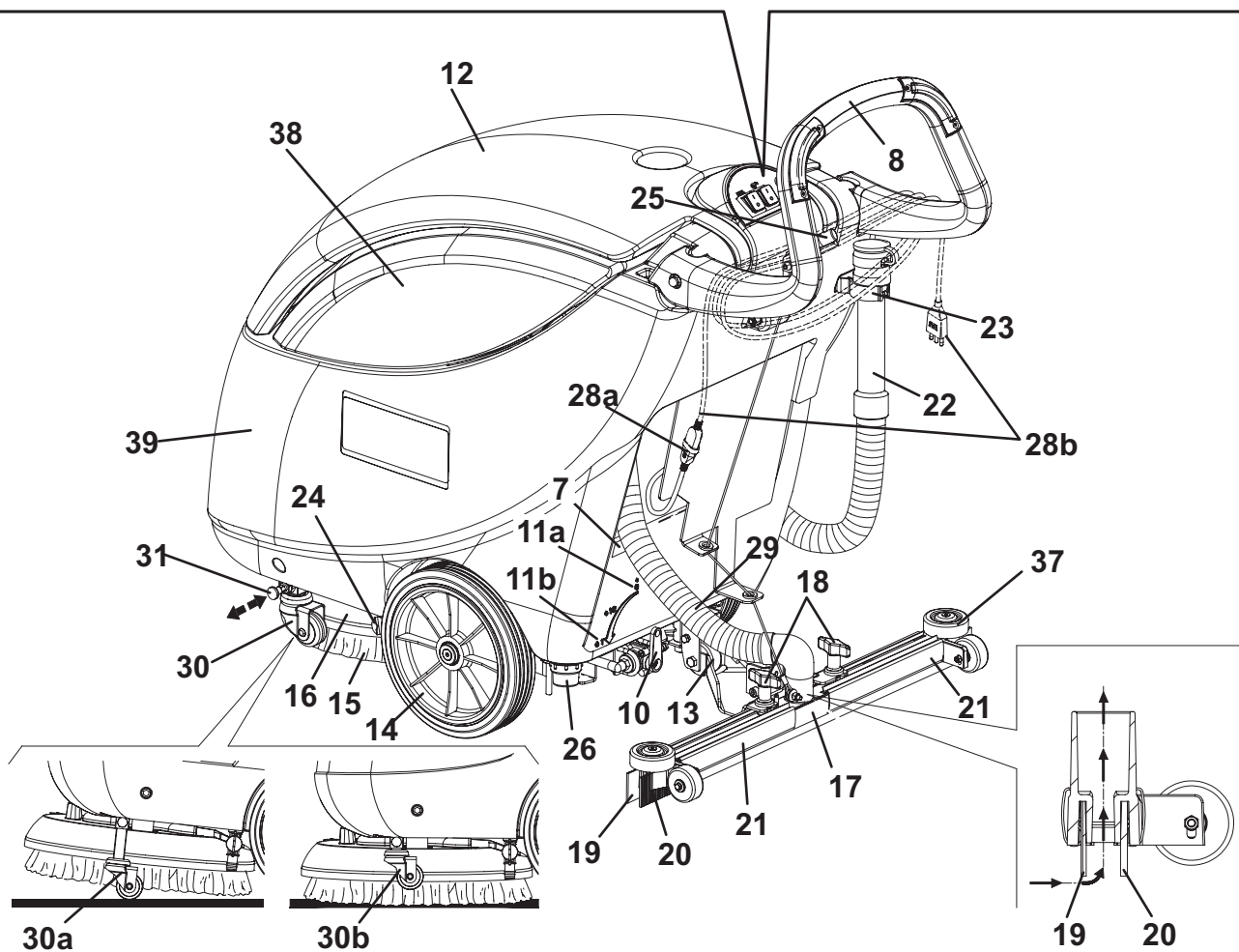
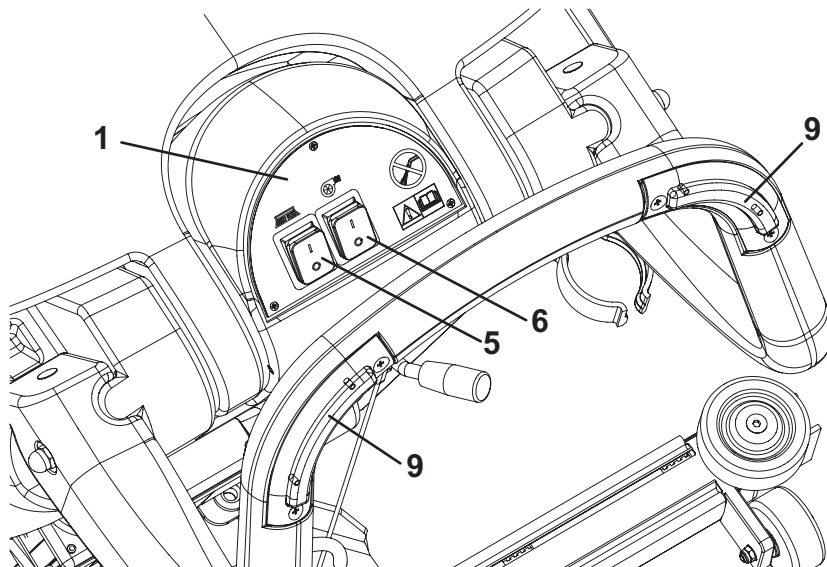
VANTAGE 17 BATTERY (continues)



S301387

# GENERAL INFORMATION

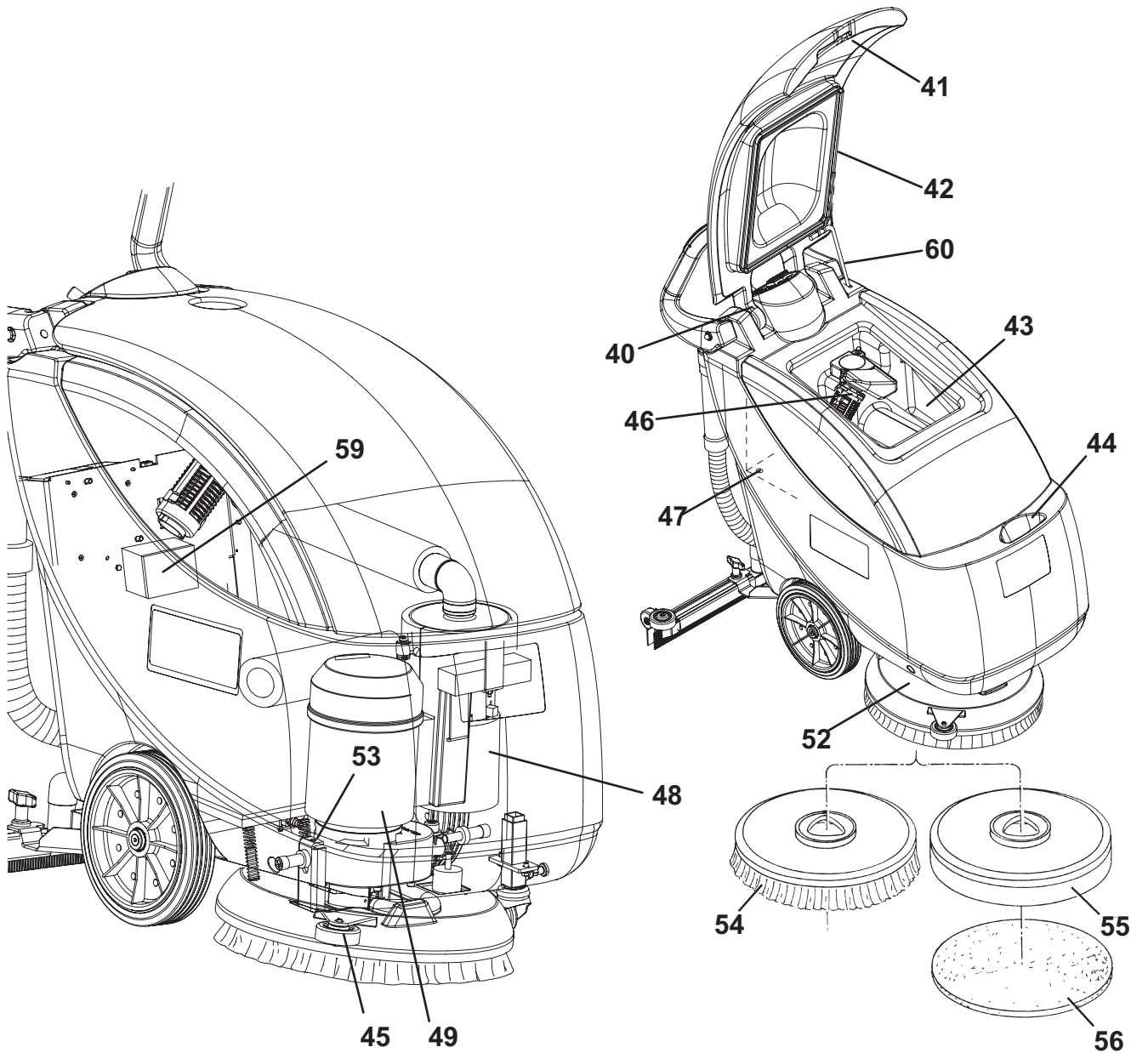
## VANTAGE 17 CABLE



S301388C

GENERAL INFORMATION

VANTAGE 17 CABLE (continues)



S301389C

## SOLUTION SYSTEM

### SOLUTION SYSTEM

#### SOLUTION TANK CLEANING [Vantage 17 Battery - 17 Cable]

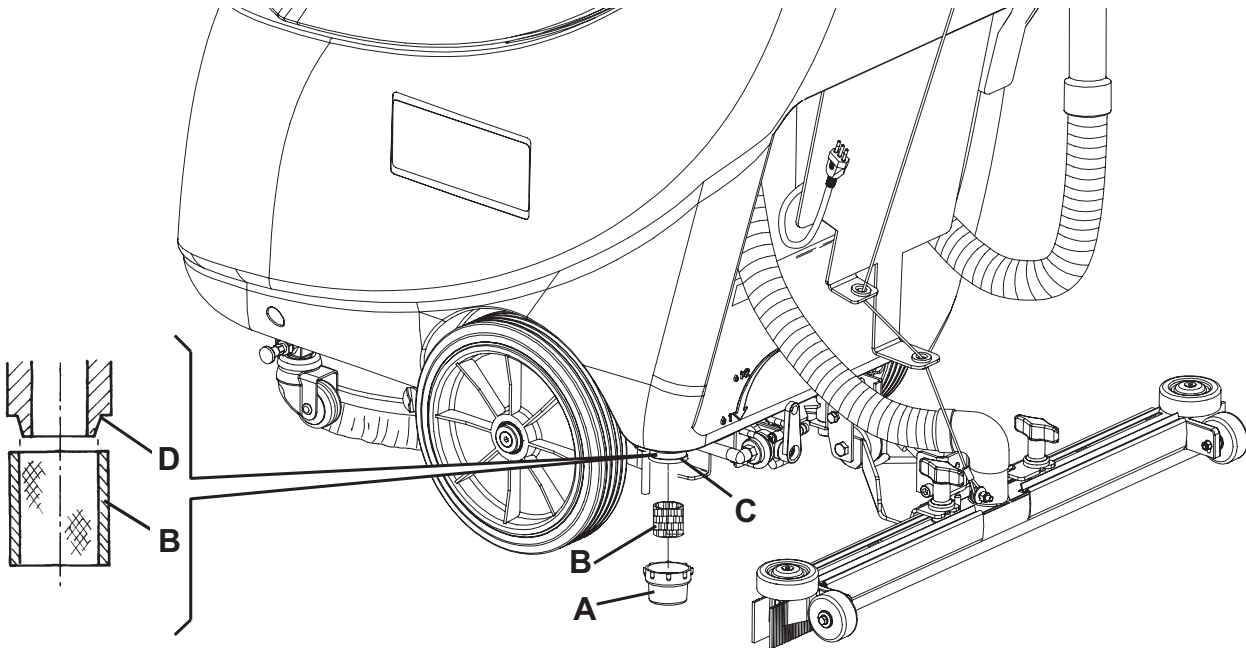
1. Drive the machine to the appointed disposal area.
2. Check that the switches (5 and 6) are turned to "0".
3. If necessary, empty the tank (44) by means of the valve (24).
4. Wash the tank (44) with clean water, then drain the water from the tank by means of the valve (24).

#### SOLUTION FILTER CLEANING [Vantage 17 Battery - 17 Cable]

1. Check that the switches (5 and 6) are turned to "0".
2. Empty the solution tank (44) by means of the valve (24).
3. Remove the transparent cover (A) and the filter strainer (B), then clean and reinstall them on the support (C).

**NOTE**

The filter strainer (B) must be correctly positioned on the housing (C) of the support (C).



S301390

[The figure shows Vantage 17 Cable]



**SOLUTION SYSTEM****SOLUTION FLOW CONTROL TAP OR SOLENOID VALVE DISASSEMBLY/ASSEMBLY [Vantage 17 Battery - 17 Cable]****Preliminary procedures**

1. Remove the batteries.
2. Use a protection to avoid damaging the machine and tilt it carefully to lay its right side on the floor.

**Solenoid valve disassembly**

3. Remove the screw (B) and disconnect the solenoid valve connector (C).
4. Remove the screws (D) and move the solenoid valve (E).
5. Disconnect the hoses (F) and (G) and recover the solenoid valve (E).

**Solenoid valve assembly**

6. Assemble in the reverse order of disassembly, and note these items:
  - When assembling a new solenoid valve (E), the stamping must point outwards; moreover, before installing the unions (M) and (N) clean the relevant threads and apply LOCTITE 572 sealant.

**Solution flow control tap disassembly**

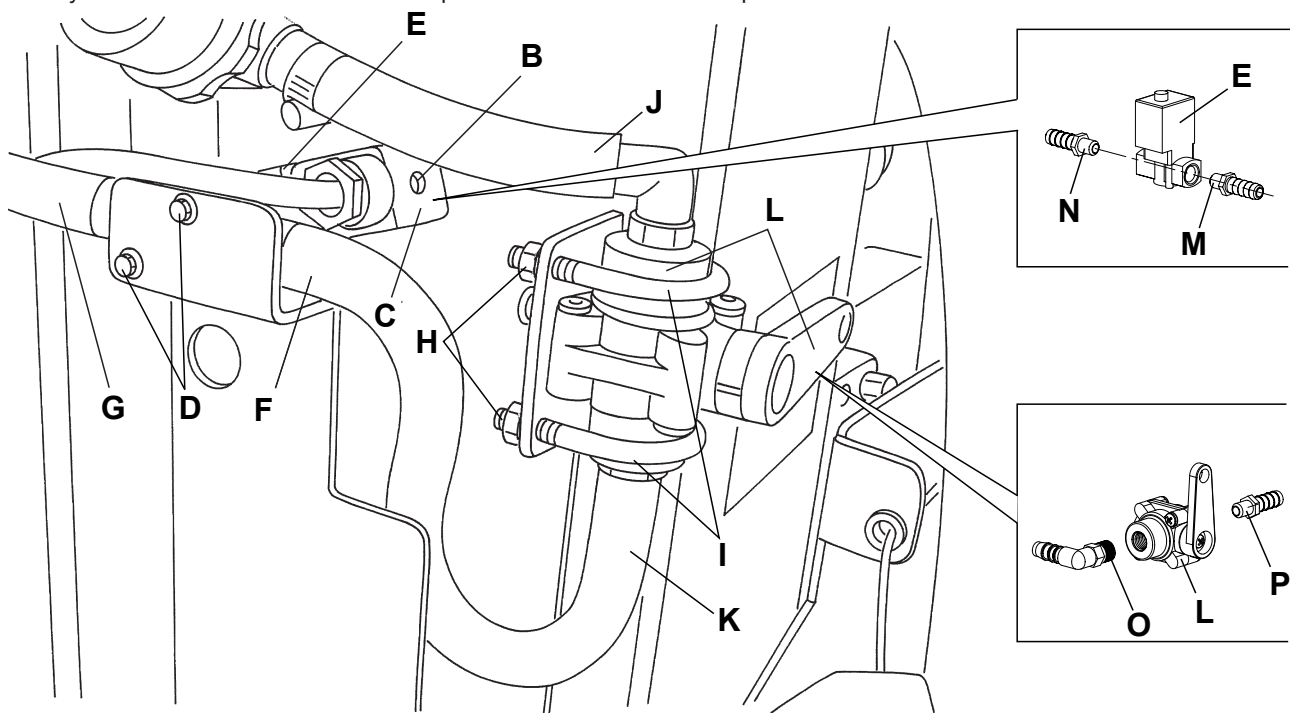
7. Remove the four nuts (H) and the two clamps (I).
8. Disconnect the hoses (J) and (K) and recover the tap (L).

**Solution flow control tap assembly**

9. Assemble in the reverse order of disassembly, and note these items:
  - before tightening the unions (O) and (P) clean the relevant threads and apply LOCTITE 572 sealant.

**Reset**

10. Carry out steps 1 and 2 in the reverse order.
11. Carry out hands-on tests to check the operation of the installed components.



S301209

## SOLUTION SYSTEM

### TROUBLESHOOTING [Vantage 17 Battery - 17 Cable]

#### SMALL AMOUNT OF THE SOLUTION OR NO SOLUTION REACHES THE BRUSH

**Possible causes:**

1. The solution filter is clogged/dirty (clean).
2. The solution flow adjusting tap is clogged/dirty (replace).
3. The solenoid valve is broken or there is an open in the electrical connection (replace the solenoid valve/repair the electrical connection).
4. There is debris in the solution tank clogging the output hole (clean the tank).
5. There is debris in the solution hose clogging the solution flow (clean the hose).
6. The detergent flow control tap is in the ECO position (adjust the detergent flow control lever)

#### THE SOLUTION REACHES THE BRUSH ALSO WHEN THE MACHINE IS OFF

**Possible cause:**

1. The solenoid valve is broken (replace).

## BRUSHING SYSTEM

## BRUSHING SYSTEM

## BRUSH MOTOR ELECTRICAL INPUT CHECK [Vantage 17 Battery]

**WARNING!**

*This procedure must be performed by qualified personnel only.*

1. Check that the brush (54) is installed on the machine.
2. Drive the machine on a level ground.
3. Check that the switches (5 and 6) are turned to "0".
4. If there is recovery water in the tank (43), drain it through the hose (22).
5. Disconnect the vacuum hose (29) from the squeegee (17).
6. Open the cover (12) and apply the cover stand (60).
7. Grasp the recovery water tank (A) in the area (B) and lift it, as shown in the figure, then disconnect the vacuum hose (C) from the tank and remove the tank (A) together with the hoses (D) and (E).

**WARNING!**

*Do not touch uncovered electrical components while performing the following steps.*

8. Set an ammeter (F) on the battery supply cable (red) (G) of the brush motor (H). Adjust the full-scale at 50 A or more.
9. Activate the brush by turning the switch (5) to "I", then check that the brush motor electrical input is within the following limits:

- with the brush on floor tiles: 8 to 10 A
- with lifted brush: 2,7 to 3,2 A

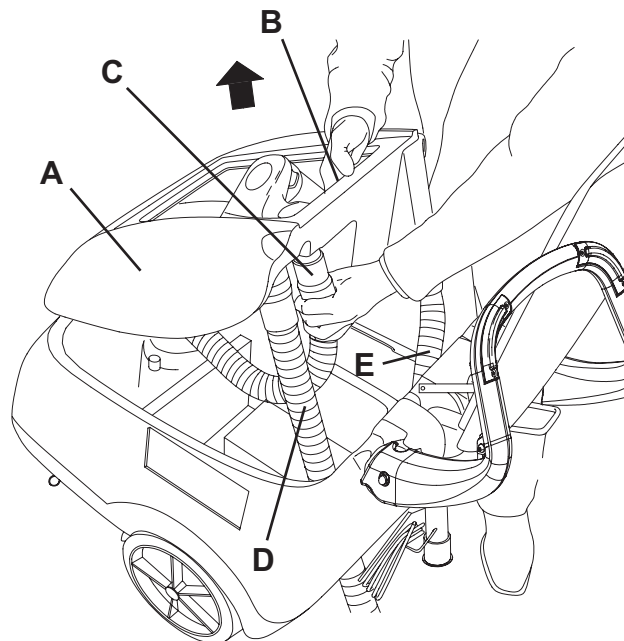
Turn the switch (5) to "0".

If the electrical input is higher, perform the following procedures to detect and eliminate the cause of the abnormal input:

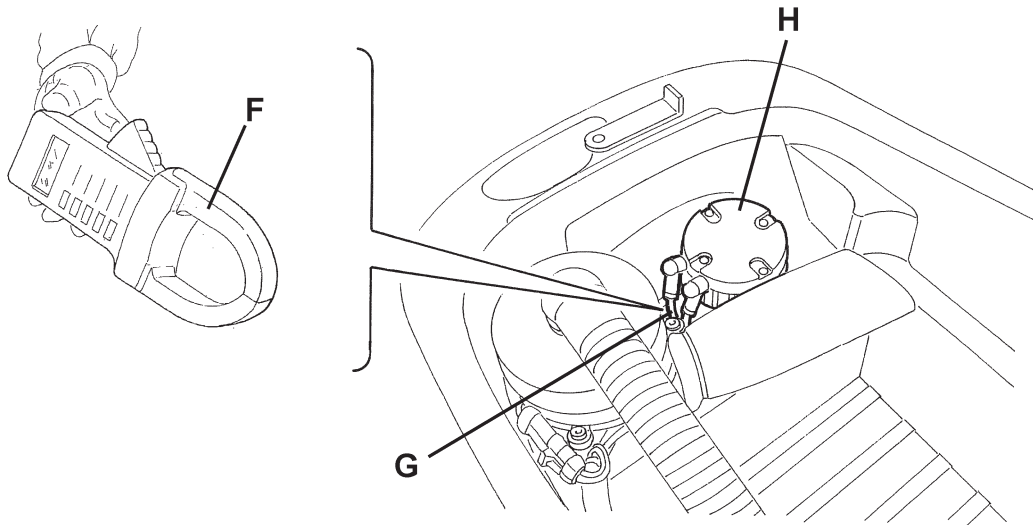
- Remove from the brush rotation shaft/flange all the possible amounts of dirt or wrapped-round materials (ropes, clothes, etc.), which prevent or slow down its rotation;
- If necessary, check the motor carbon brushes;
- If necessary, disassemble the motor, clean it and check its moving parts.

If the above-mentioned procedures do not lead to a correct electrical input, the motor must be replaced.

10. Carry out steps from 5 to 8 in the reverse order.



S301369C

**BRUSHING SYSTEM****BRUSH MOTOR ELECTRICAL INPUT CHECK [Vantage 17 Battery] (continues)**

S301370

## BRUSHING SYSTEM

## BRUSH MOTOR ELECTRICAL INPUT CHECK [Vantage 17 Cable]

**WARNING!**

*This procedure must be performed by qualified personnel only.*

1. Check that the brush (A) is installed on the machine.
2. Drive the machine on a level ground.
3. Check that the switches (5 and 6) are turned to "0".
4. If there is recovery water in the tank (43), drain it through the hose (22).
5. Disconnect the vacuum hose (29) from the squeegee (17).
6. Open the cover (12) and apply the cover stand (60).
7. Grasp the recovery water tank (A) in the area (B) and lift it, as shown in the figure, then disconnect the vacuum hose (C) from the tank and remove the tank (A) together with the hoses (D) and (E).

**WARNING!**

*Do not touch uncovered electrical components while performing the following steps.*

8. Remove the screws (F) and the terminal board box sealing cover (G). When installing the terminal board box cover (G), check for gasket integrity and efficiency.
9. Set an ammeter (H) on the brush motor supply cable (I).
10. Activate the brush by turning the switch (5) to "I", then check that the brush motor electrical input is within the following limits:

Vantage 17 Cable - 230 Volts, 50 - 60 Hz

- with the brush on floor tiles: 4 to 5 A
- with lifted brush: 4 to 4.5 A

Vantage 17 Cable - 115 Volts, 60 Hz

- with the brush on floor tiles: 6 to 8 A
- with lifted brush: 5.5 to 6 A

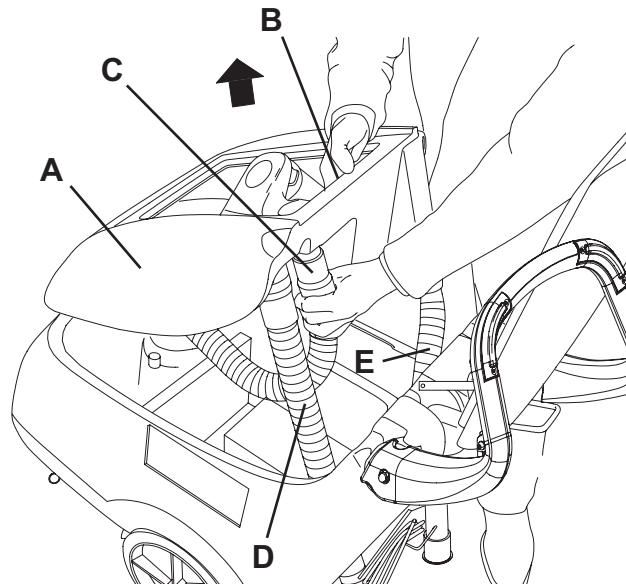
Turn the switch (5) to "0".

If the electrical input is higher, perform the following procedures to detect and eliminate the cause of the abnormal input:

- Remove from the brush rotation shaft/flange all the possible amounts of dirt or wrapped-round materials (ropes, clothes, etc.), which prevent or slow down its rotation;
- If necessary, check the motor carbon brushes;
- If necessary, disassemble the motor, clean it and check its moving parts.

If the above-mentioned procedures do not lead to a correct electrical input, the motor must be replaced.

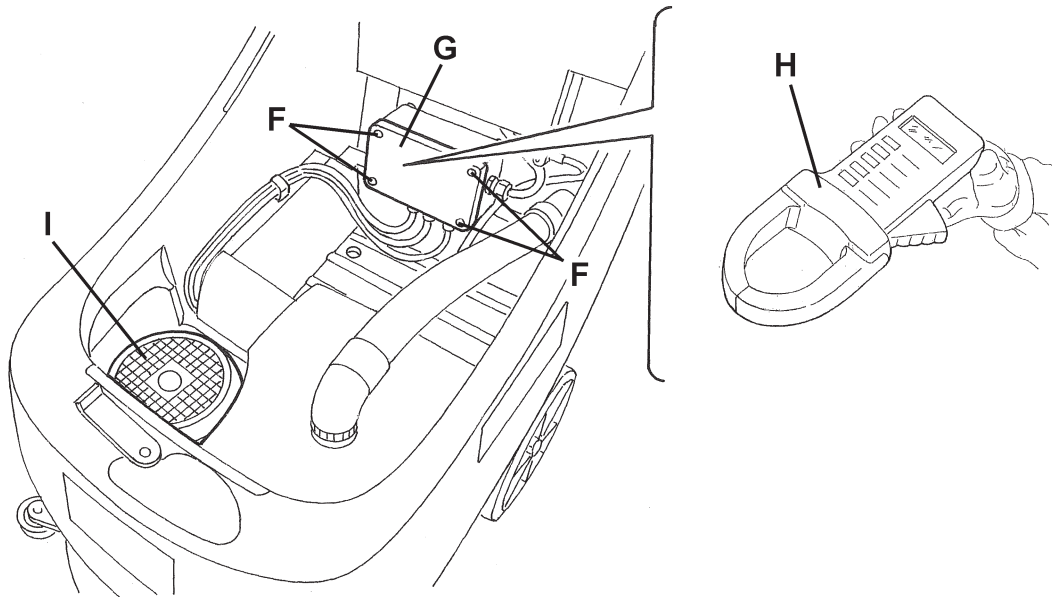
11. Carry out steps from 5 to 9 in the reverse order.



S301369C

## BRUSHING SYSTEM

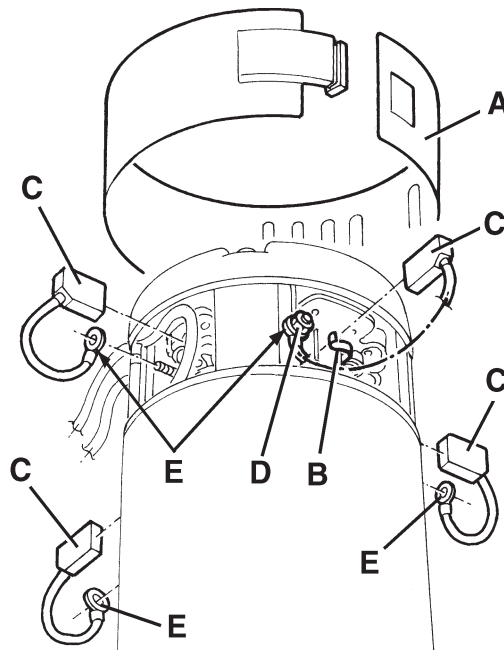
### BRUSH MOTOR ELECTRICAL INPUT CHECK [Vantage 17 Cable] (continues)



S301210

### BRUSH MOTOR CARBON BRUSH CHECK AND REPLACEMENT [Vantage 17 B] (for machines before 2007/05)

1. Remove the brush/pad-holder deck (see the procedure in the relevant paragraph).
2. At the workbench, remove dust and dirt from the outside of the motor, then disengage and remove the clamp (A).
3. Lift the retaining spring (B) of each carbon brush, then remove the four carbon brushes (C).
4. Check if the four carbon brushes are worn out. Replace the carbon brushes when: the contact with the motor armature is insufficient, the carbon brushes are worn, the carbon brush contact surface is not integral, the thrust spring is broken, etc.
5. If necessary, remove the nuts (D) and disengage the lead-in wires (E), then remove the carbon brushes. Replace the carbon brushes as an assembly.
6. Assemble in the reverse order of disassembly, and note these items:
  - When connecting the terminals (E), take care of their insulation from the surrounding parts of the frame.



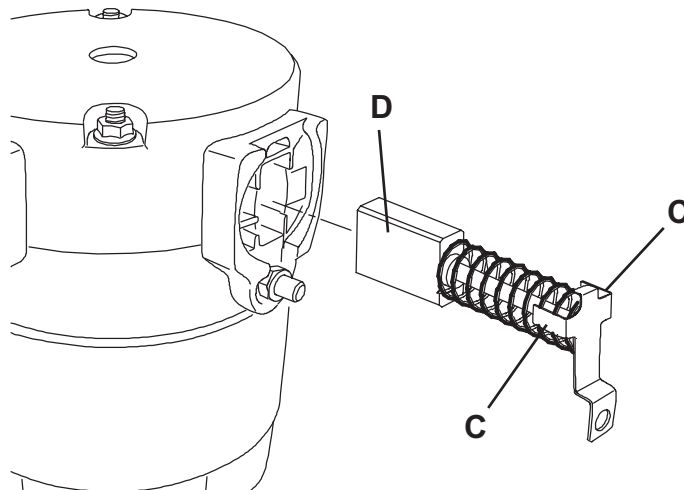
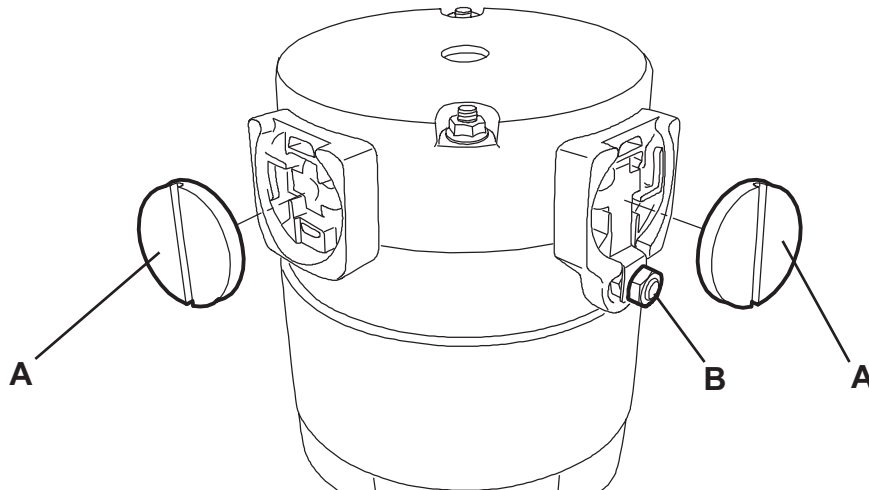
S300310

**BRUSHING SYSTEM****BRUSH MOTOR CARBON BRUSH CHECK AND REPLACEMENT [Vantage 17 B] (for machines after 2007/05)**

1. Remove the brush/pad-holder deck (see the procedure in the relevant paragraph).
2. At the workbench, remove dust and debris from the motor, especially in the area of the carbon brushes.
3. Remove four protection covers (A) by disengaging the fasteners.
4. Remove the carbon brush nuts (B) with the lead-in wires.
5. Disengage the tabs (C) and remove the carbon brushes (D).
6. Check if the carbon brushes (D) are worn. Replace the carbon brushes when: the contact with the motor armature is insufficient, the carbon brushes are worn, the carbon brush contact surface is not integral, the thrust spring is broken, etc. Replace the carbon brushes as an assembly.

**Reset**

7. Assemble the components in the reverse order of disassembly.



S301543

## BRUSHING SYSTEM

### BRUSH MOTOR AND REDUCTION UNIT DISASSEMBLY/ASSEMBLY [Vantage 17 Battery]

#### Motor/reduction unit disassembly/assembly

1. Remove the brush/pad-holder (54/55), according to the instructions in the Instructions for Use Manual.
2. Remove the brush/pad-holder deck.
3. At the workbench, remove the central screw (A).
4. Remove the polygonal support (B).
5. Recover the key (C).
6. Remove the screws (D).
7. Remove the brush motor (E).
8. Assemble in the reverse order of disassembly.

#### Separating the motor from the reduction unit

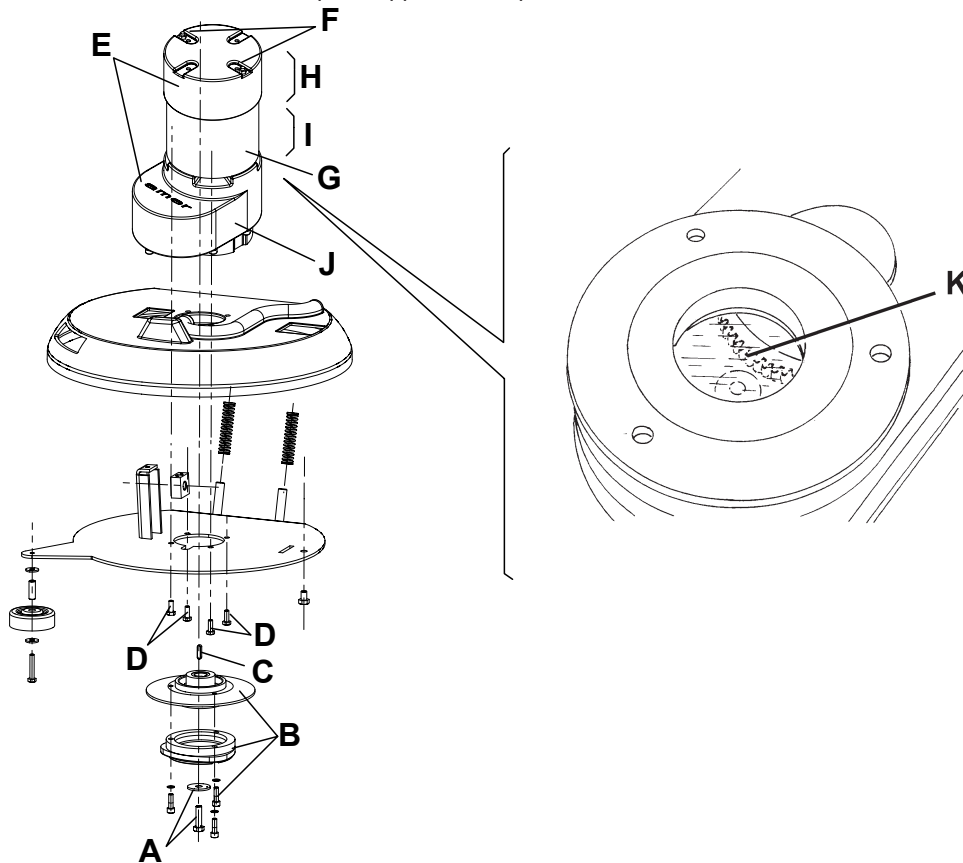
9. Disassemble the motor/reduction unit as above indicated.
10. Remove the nuts (F) fixing the motor to the reduction unit.
11. Carefully lift and remove the motor (E) together with the pinion and bearing.



#### CAUTION!

*To prevent part (H) and part (I) from separating during the motor disassembly/assembly, it is advisable to apply adhesive tape temporarily to keep the two parts together.*

12. Recover the reduction unit and the oil (J).
13. Assemble in the reverse order of disassembly, and note these items:
  - Before installing the new reduction unit, fill in with oil of the type and quantity indicated on the reduction unit data plate (SAE W 80 - 90 oil). The oil in the tank must cover the gear (K).
  - Remember to remove the adhesive tape, if applied at step 11.



S301213

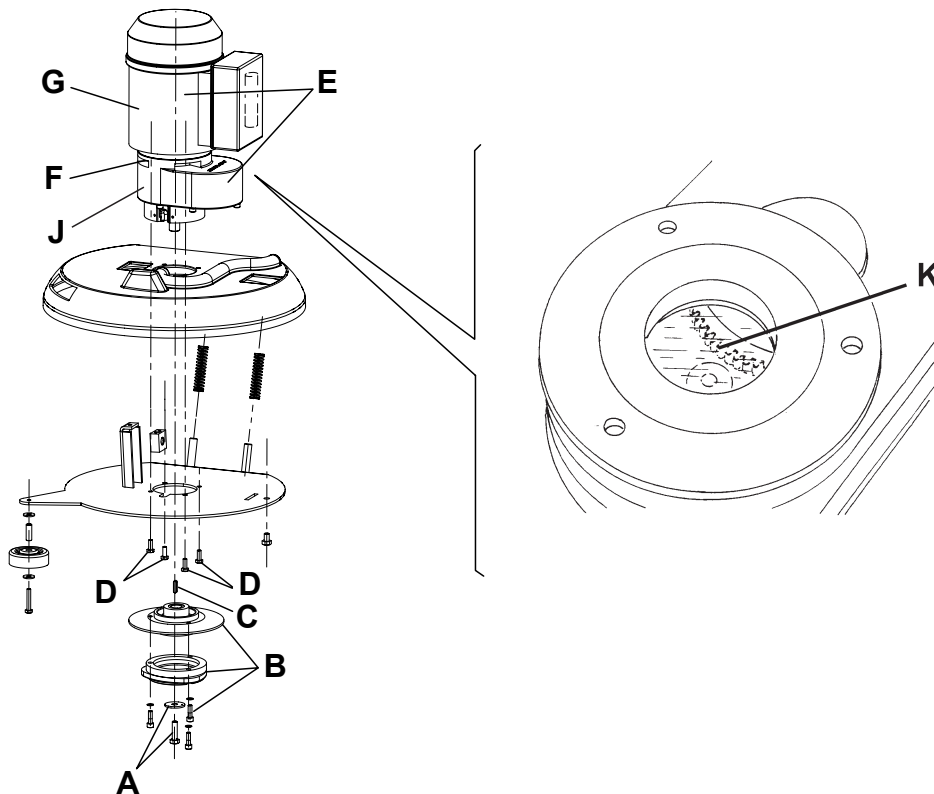


**BRUSHING SYSTEM****BRUSH MOTOR AND REDUCTION UNIT DISASSEMBLY/ASSEMBLY [Vantage 17 Cable]****Motor/reduction unit disassembly/assembly**

1. Remove the brush/pad-holder (54/55), according to the instructions in the Instructions for Use Manual.
2. Remove the brush/pad-holder deck.
3. At the workbench, remove the central screw (A).
4. Remove the polygonal support (B).
5. Recover the key (C).
6. Remove the screws (D).
7. Remove the brush motor (E).
8. Assemble in the reverse order of disassembly.

**Separating the motor from the reduction unit**

9. Disassemble the motor/reduction unit as above indicated.
10. Remove the nuts (F) fixing the motor to the reduction unit.
11. Carefully lift and remove the motor (E) together with the pinion and bearing.
12. Recover the reduction unit and the oil (J).
13. Assemble in the reverse order of disassembly, and note these items:
  - Before installing the new reduction unit, fill in with oil of the type and quantity indicated on the reduction unit data plate (SAE W 80 - 90 oil). The oil in the tank must cover the gear (K).



S301214

## BRUSHING SYSTEM

### TROUBLESHOOTING [Vantage 17 Battery]

#### OPEN CIRCUIT

The brush motor fuse F1 determines the open circuit. This system allows to prevent the brush motor and circuits from being damaged under overload conditions.

If there is an open in the circuit, the possible causes are:

1. Bulky debris or cords around the brush or between the brush and its flange (remove the brush and the debris or cords).
2. The brush motor electrical input is too high (check the electrical input).

#### THE BRUSH DOES NOT ROTATE

##### Possible causes:

1. The battery voltage is too low (charge the battery).
2. The motor carbon brushes are worn (replace).
3. The motor is faulty (repair or replace).
4. The brush motor fuse is burned (solve the problem and replace the fuse).
5. The brush ON/OFF switch (5) is broken (replace).
6. The reduction unit is faulty (repair or replace).
7. The wiring harness is damaged (repair).
8. The brush electromagnetic switch is damaged (replace).

### TROUBLESHOOTING [Vantage 17 Cable]

#### THE BRUSH DOES NOT ROTATE

##### Possible causes:

1. The power supply cable is broken (replace).
2. The motor is faulty (repair or replace).
3. The brush ON/OFF switch (5) is broken (replace).
4. The reduction unit is faulty (repair or replace).
5. The wiring harness is damaged (repair).

## RECOVERY WATER SYSTEM

## RECOVERY WATER SYSTEM

## TANK AND VACUUM GRID WITH FLOAT CLEANING [Vantage 17 Battery - 17 Cable]

1. Drive the machine to the appointed disposal area.
2. Check that the switches (5 and 6) are turned to "0".
3. If necessary, empty the tank (43) by means of the hose (22).
4. Lift the cover (41), then wash with clean water the cover, the tank (43) and the vacuum grid (46).  
Drain the water in the tank through the hose (22).
5. If necessary, release the fasteners (A) and open the grid (B), recover the float (C), clean all the components and then reinstall them.
6. Check the recovery water tank cover gasket (D) for integrity.



## NOTE

The gasket (D) creates vacuum in the tank that is necessary for vacuuming the recovery water.

If necessary replace the gasket (D) after removing it from its housing (E).

When assembling the new gasket, install its joint (F) in the central area, as shown in the figure.

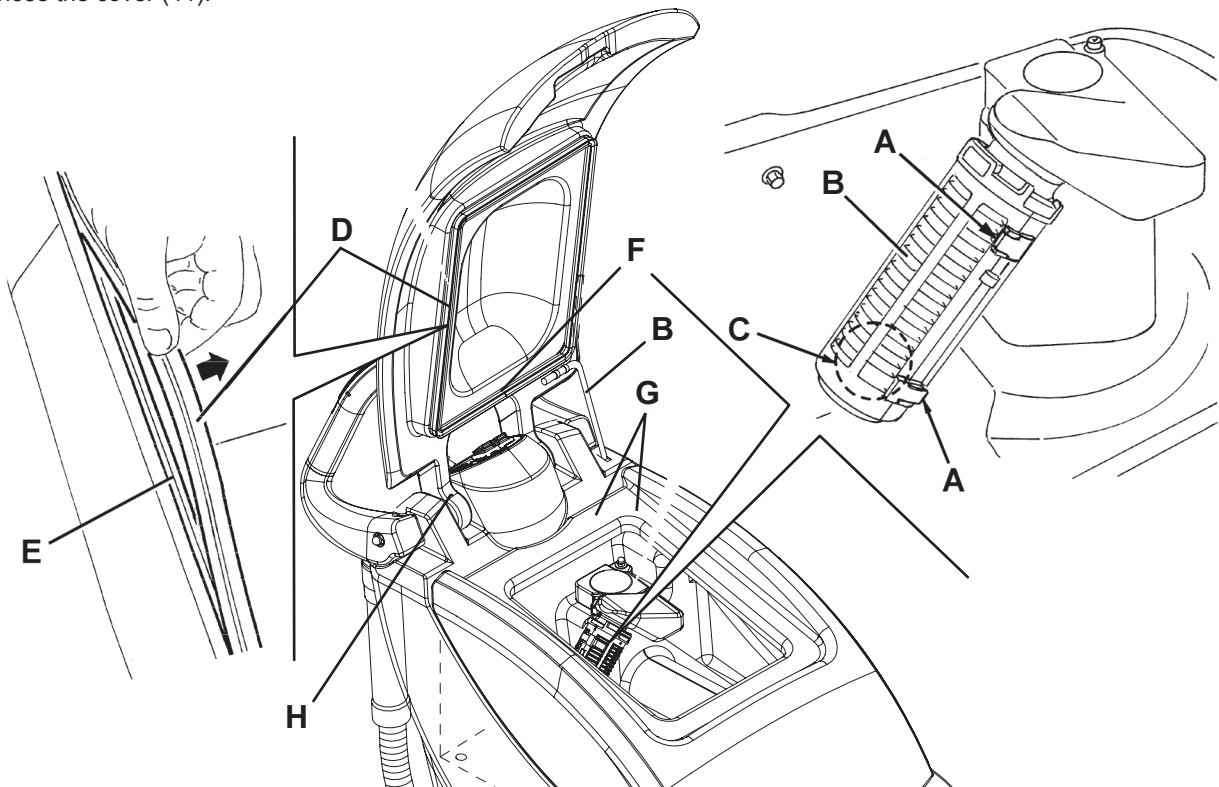
7. Check the gasket (G) bearing surface (D) for integrity and sealing capabilities.
8. Check the compensation hole (H) for clogging.



## NOTE

The hole (H) compensates the air in the cover interspaces, thus allowing the creation of vacuum in the recovery water tank.

9. Close the cover (41).



S301372

## RECOVERY WATER SYSTEM

### VACUUM SYSTEM MOTOR ELECTRICAL INPUT CHECK [Vantage 17 Battery - 17 Cable]


**WARNING!**

*This procedure must be performed by qualified personnel only.*

1. Drive the machine on a level ground.
2. Check that the switches (5 and 6) are turned to "0".
3. If there is recovery water in the tank (43), drain it through the hose (22).
4. Disconnect the vacuum hose (29) from the squeegee (17).
5. Open the cover (12) and apply the cover stand (60).
6. Grasp the recovery water tank (A) in the area (B) and lift it, as shown in the figure, then disconnect the vacuum hose (C) from the tank and remove the tank (A) together with the hoses (D) and (E).  
(Vantage 17 Cable) Loosen the clamp (I) and disconnect the hoses (J), then remove the waterproof cover (K).


**WARNING!**

*Do not touch uncovered electrical components while performing the following steps.*

7. Place an ammeter (F) on one of the cables (G) of the vacuum system motor (H).
8. Activate the vacuum system by turning the switch (6) to "1", then check that the vacuum system motor electrical input is within the following limits:

Vantage 17 Battery:

- 14 to 17 A

Vantage 17 Cable - 230 V, 50 - 60 Hz:

- 2 to 2.5 A

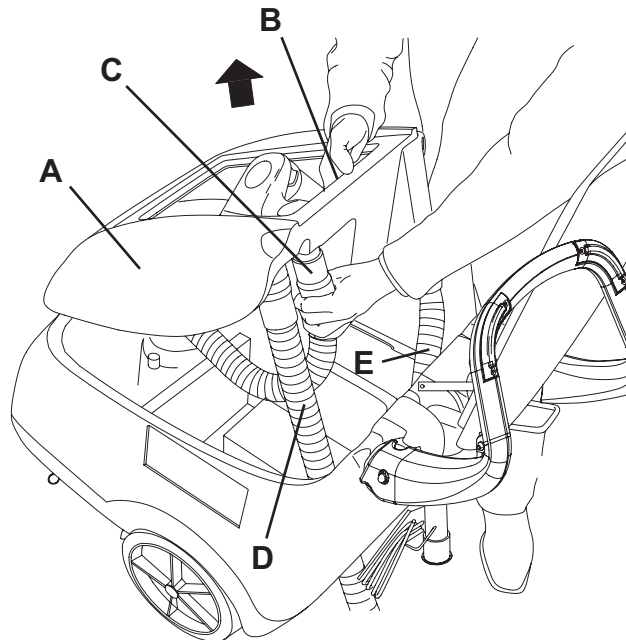
Vantage 17 Cable - 115 V, 60 Hz:

- 4 to 4.5 A

Turn the switch (6) to "0".

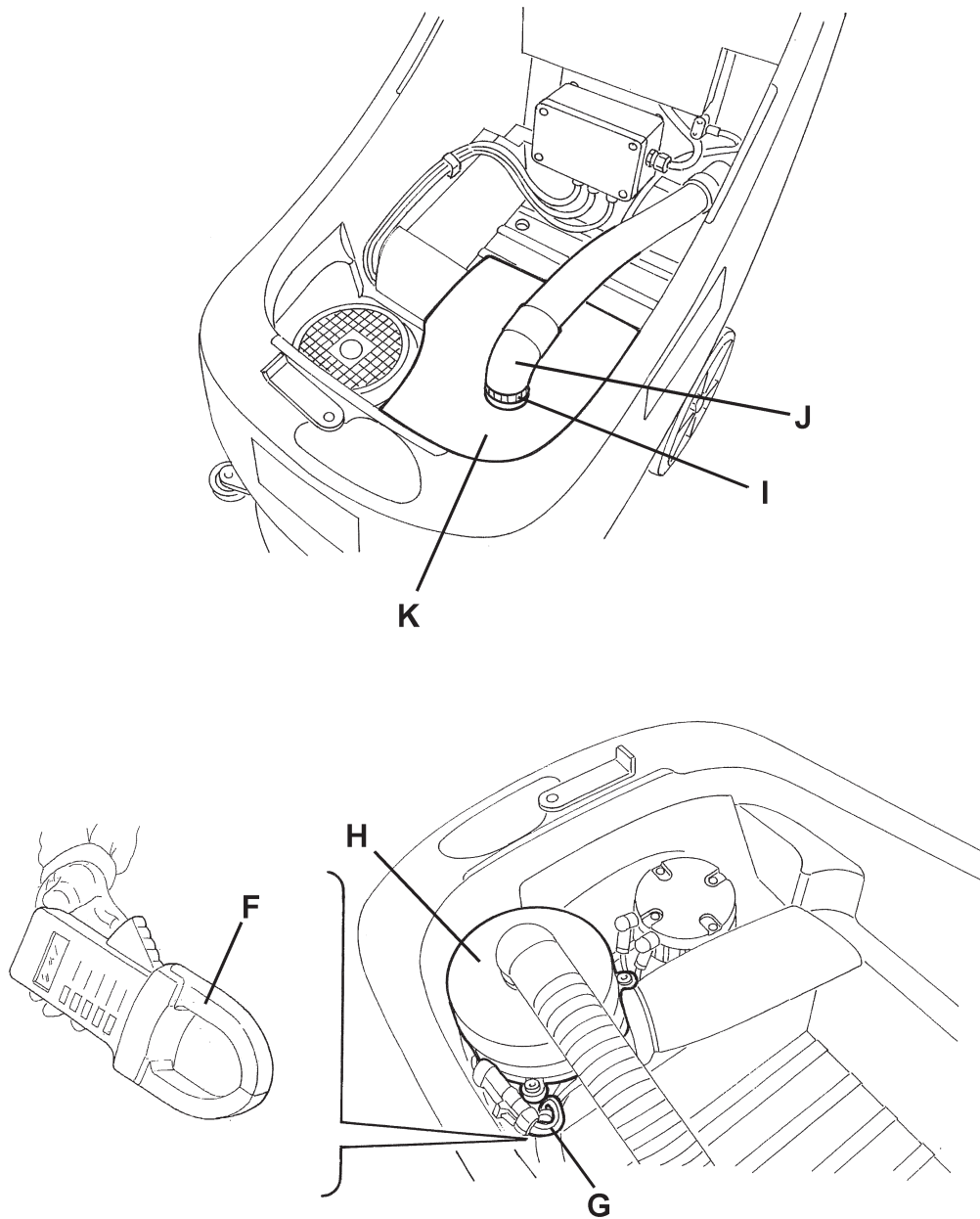
If the electrical input is higher, perform the following procedures to detect and eliminate the cause of the abnormal input:

- Check the motor carbon brushes;
  - If necessary, disassemble the motor and clean it carefully, then check the condition of its moving parts.
  - If the above-mentioned procedures do not lead to a correct electrical input, the motor must be replaced.
9. Carry out steps from 4 to 8 in the reverse order.



S301369C

## RECOVERY WATER SYSTEM

VACUUM SYSTEM MOTOR ELECTRICAL INPUT CHECK [Vantage 17 Battery - 17 Cable]  
(continues)

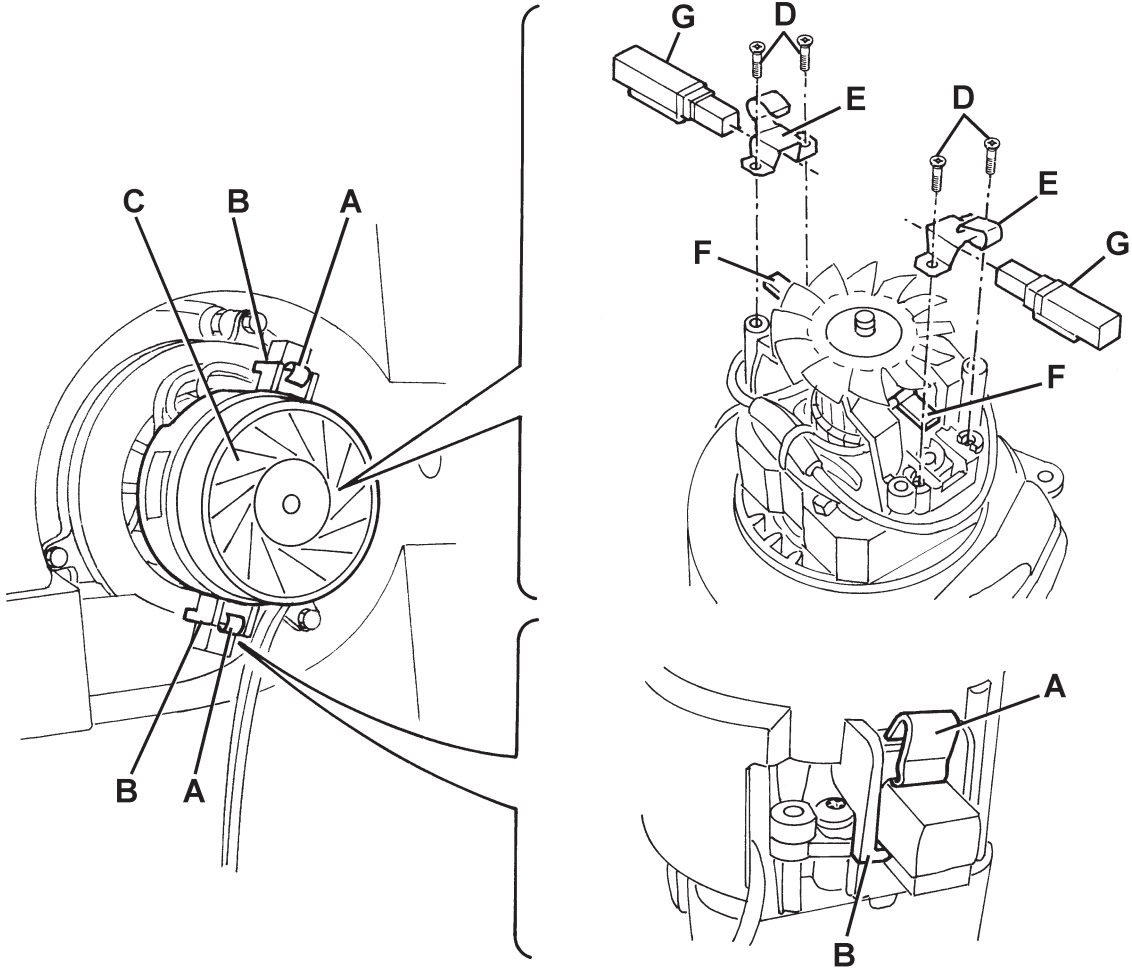
S301373

[The figure shows Vantage 17 Battery]

## RECOVERY WATER SYSTEM

### VACUUM SYSTEM MOTOR CARBON BRUSH CHECK AND REPLACEMENT [Vantage 17 Battery - 17 Cable]

1. Remove the vacuum system motor (see the procedure in the relevant paragraph).
2. At the workbench, disengage the fasteners (A) and (B), then remove the cover (C) from the vacuum system motor.
3. Remove the screws (D) and the fasteners (E).
4. Disconnect the electrical connections (F) and remove the brushes (G).
5. Check the carbon brushes for wear. Replace the carbon brushes when: the contact with the motor armature is insufficient, the carbon brushes are worn, the carbon brush contact surface is not integral, the thrust spring is broken, etc.
6. If necessary, replace the carbon brushes. Replace the carbon brushes as an assembly.
7. Assemble in the reverse order of disassembly.

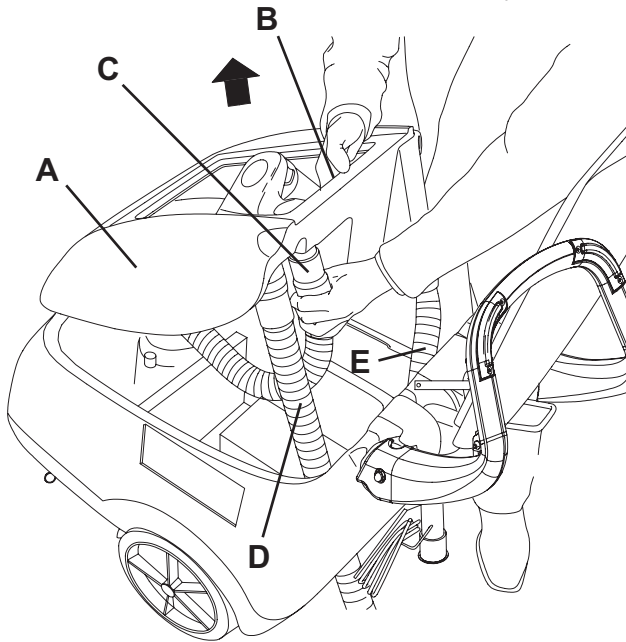


S301231

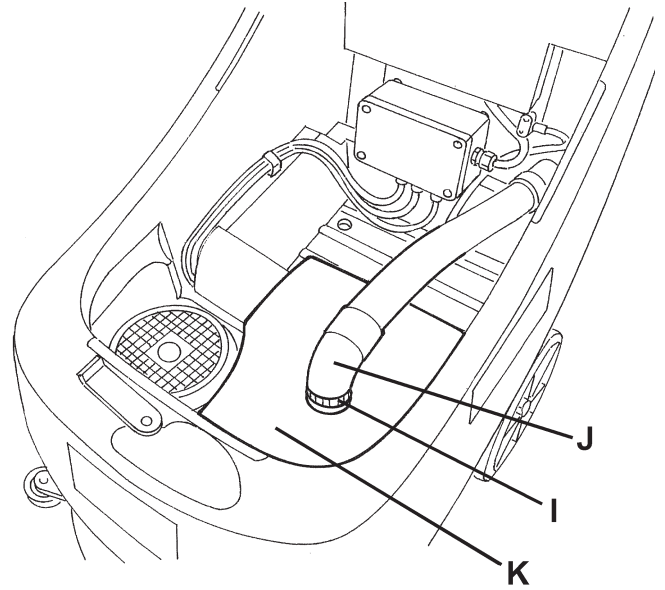
## RECOVERY WATER SYSTEM

## VACUUM SYSTEM MOTOR DISASSEMBLY/ASSEMBLY [Vantage 17 Battery - 17 Cable]

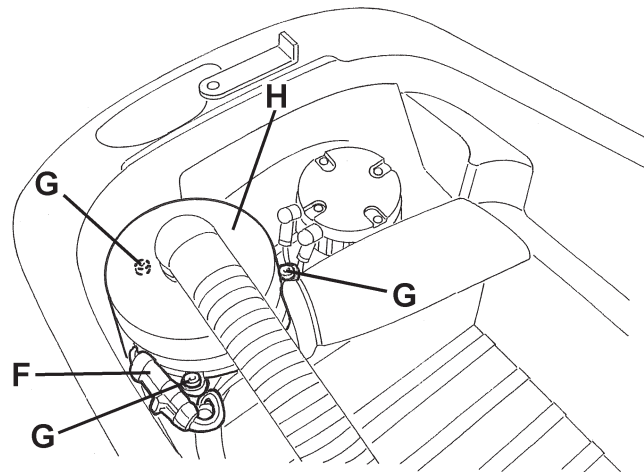
1. Check that the switches (5 and 6) are turned to "0".
2. If there is recovery water in the tank (43), drain it through the hose (22).
3. Disconnect the vacuum hose (29) from the squeegee (17).
4. Open the cover (12) and apply the cover stand (60).
5. Grasp the recovery water tank (A) in the area (B) and lift it, as shown in the figure, then disconnect the vacuum hose (C) from the tank and remove the tank (A) together with the hoses (D) and (E).  
(Vantage 17 Cable) Loosen the clamp (I) and disconnect the hoses (J), then remove the waterproof cover (K).
6. Disconnect the vacuum system motor electrical connector (F).
7. Remove the vacuum system motor fastening screws (G).
8. Remove the vacuum system motor (H).
9. Assemble in the reverse order of disassembly.



S301369C



S301374



S301217

## RECOVERY WATER SYSTEM

### SQUEEGEE DISASSEMBLY/ASSEMBLY [Vantage 17 Battery - 17 Cable]

1. Check that the switches (5 and 6) are turned to "0".
2. Lower the squeegee (17) by means of the lever (25).
3. Disconnect the vacuum hose (29) from the squeegee.
4. Loosen the handwheels (18) and remove the squeegee (17).
5. Assemble in the reverse order of disassembly.

### SQUEEGEE CLEANING/CHECK AND BLADE REPLACEMENT [Vantage 17 Battery - 17 Cable]



#### CAUTION!

*It is advisable to use protective gloves when cleaning the squeegee because there may be cutting debris.*

#### Preliminary procedures

1. Remove the squeegee.

#### Cleaning

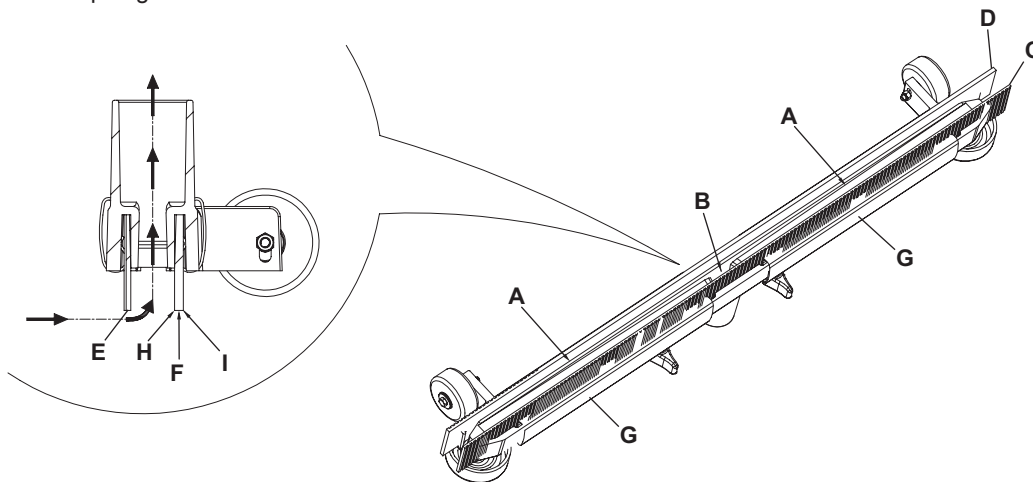
2. Wash and clean the squeegee; in particular, clean the compartments (A) and the vacuum hole (B) from dirt and debris. Check the front blade (C) and the rear blade (D) for integrity, cuts and tears; otherwise replace them.

#### Blade check and overturning/replacement

3. Check that the edges (E) of the front blade and the edges (F) of the rear blade lay down on the same level, along their length; otherwise adjust their height according to the following procedure:
  - Remove the fixing springs (G) and adjust the front blade (C) and the rear blade (D). Reinstall the fixing springs on the properly adjusted front and rear blades.
4. Check the front blade (C) and rear blade (D) for integrity, cuts and tears; otherwise replace them according to the following procedure. Also check the front corner (H) of the rear blade for wear; if it is worn, overturn the blade to replace the worn corner with the other one (I), provided that it is integral. If the other corner (I) is worn too, replace the blade according to the following procedure:
  - Remove the fixing springs (G) and replace (or overturn) the rear blade (D). Reinstall the fixing springs on the properly adjusted front and rear blades, according to the procedure shown in the previous step.

#### Reset

5. Assemble the squeegee.



S301218



**RECOVERY WATER SYSTEM****TROUBLESHOOTING [Vantage 17 Battery]****OPEN CIRCUIT**

The vacuum system motor fuse 1 determines the open circuit. This system allows to prevent the vacuum system motor and its circuits from being damaged under overload conditions.

If there is an open in the circuit, the possible causes are:

1. The motor is damaged (check the motor carbon brushes/electrical input).
2. The electrical input is excessive (check the motor for proper rotation).

**TROUBLESHOOTING [Vantage 17 Battery - 17 Cable]****DIRTY WATER VACUUMING IS INSUFFICIENT OR THERE IS NO VACUUMING****Possible causes:**

1. The vacuum grid with automatic shut-off float (46) is activated because the water recovery tank (43) is full (empty the water recovery tank).
2. The grid (46) is dirty (clean).
3. The recovery water tank cover (12) is not correctly positioned (adjust).
4. The tank cover gasket (42) is not efficient or the compensating hole is clogged (solve the problems).
5. The squeegee or the vacuum hose is clogged or damaged (clean or repair/replace).
6. The vacuum system motor carbon brushes are worn (replace).
7. The vacuum system motor is faulty (repair or replace).
8. The vacuum ON/OFF switch (6) is broken (replace).
9. The wiring harness is damaged (repair).
10. The vacuum system motor electromagnetic switch is broken (replace).

**THE SQUEEGEE LEAVES LINING ON THE FLOOR OR DOES NOT COLLECT WATER****Possible causes:**

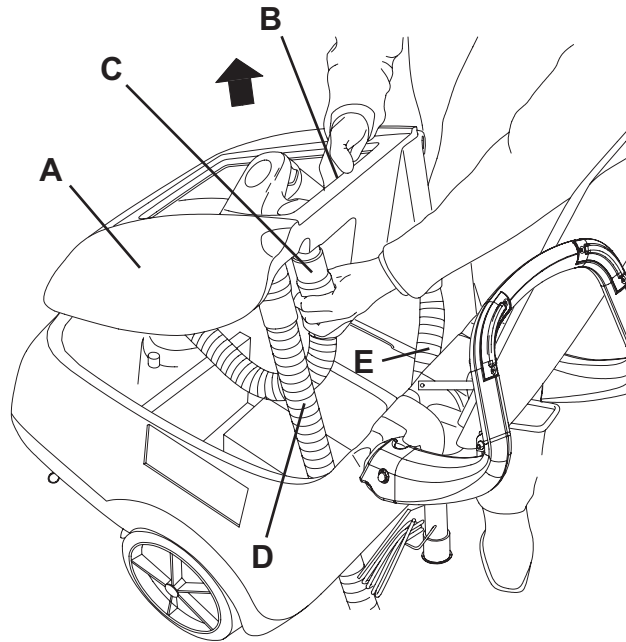
1. There is debris under the squeegee lip (remove).
2. The squeegee blades are torn or worn (replace).
3. The squeegee front and rear blade are not aligned (align).

## OTHER SYSTEMS

### OTHER SYSTEMS

#### MACHINE SPEED ADJUSTMENT [Vantage 17 Battery - 17 Cable]

1. Check that the switches (5 and 6) are turned to "0".
2. If there is recovery water in the tank (43), drain it through the hose (22).
3. Disconnect the vacuum hose (29) from the squeegee (17).
4. Open the cover (12) and apply the cover stand (60).
5. Grasp the recovery water tank (A) in the area (B) and lift it, as shown in the figure, then disconnect the vacuum hose (C) from the tank and remove the tank (A) together with the hoses (D) and (E).
6. Adjust the machine speed by means of the screw (53), according to the following procedure:
  - Loosen the screw (57) on the right side of the machine, by turning it counter-clockwise.
  - Turn the adjusting screw (53) counter-clockwise to increase the machine speed.
  - Turn the adjusting screw (53) clockwise to decrease the machine speed.
  - After adjusting, tighten the screw (57).
7. Carry out steps from 3 to 5 in the reverse order.
8. With the machine ready to operate, carry out hands-on tests of the machine speed and, if other adjustments are necessary, repeat steps 1 to 8.



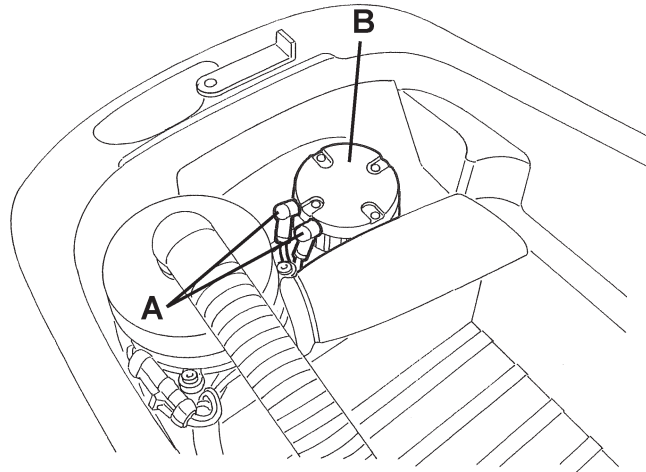
S301369C

**BRUSH/PAD-HOLDER DECK DISASSEMBLY/ASSEMBLY [Vantage 17 Battery]****Disassembly**

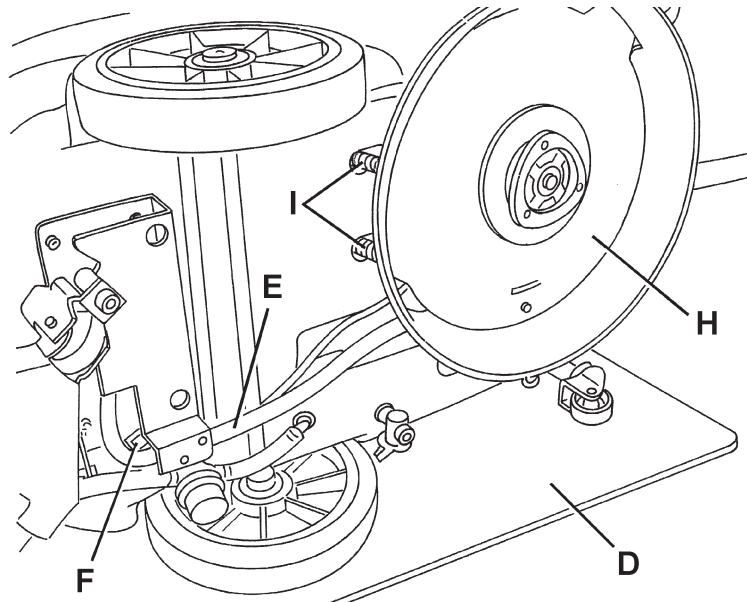
1. Remove the batteries.
2. Remove the caps (A) and disconnect the electrical connections from the brush motor (B).
3. Remove the left deck fastening screw (58).
4. Use a protection (D) to avoid damaging the machine and tilt it carefully to lay its left side on the floor.
5. Disconnect the solution hose (E) from the solenoid valve (F).
6. Remove the right deck fastening screw (57).
7. Remove the deck (H).

**Assembly**

8. Assemble in the reverse order of disassembly, and note these items:
  - When reassembling the deck (H), reinsert the deck fixing springs (I) correctly.



S301376



S301220

## OTHER SYSTEMS

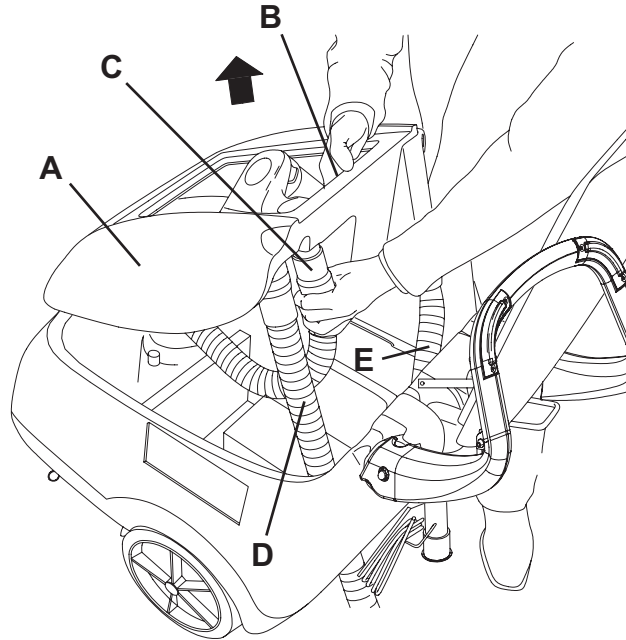
### BRUSH/PAD-HOLDER DECK DISASSEMBLY/ASSEMBLY [Vantage 17 Cable]

#### Disassembly

1. Check that the switches (5 and 6) are turned to "0".
2. If there is recovery water in the tank (43), drain it through the hose (22).
3. Disconnect the vacuum hose (29) from the squeegee (17).
4. Open the cover (12) and apply the cover stand (60).
5. Grasp the recovery water tank (A) in the area (B) and lift it, as shown in the figure, then disconnect the vacuum hose (C) from the tank and remove the tank (A) together with the hoses (D) and (E).
6. Remove the screws (F) and the terminal board box sealing cover (G), then disconnect the brush motor cable (H) from the terminal board.
7. Disconnect the brush motor cable (H) from the fasteners (I).
8. Remove the left deck fastening screw (58).
9. Use a protection (K) to avoid damaging the machine and tilt it carefully to lay its left side on the floor.
10. Disconnect the solution hose (L) from the solenoid valve (M).
11. Remove the right deck fastening screw (57).
12. Remove the deck (O).

#### Assembly

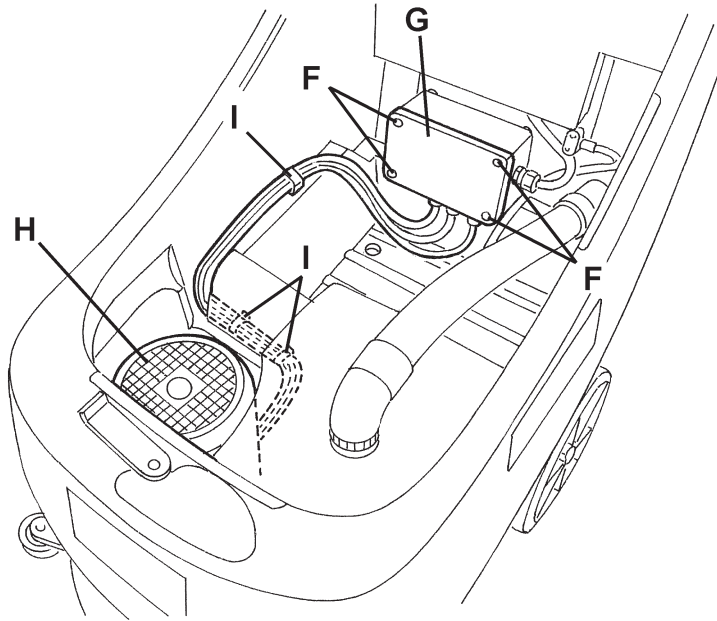
13. Assemble in the reverse order of disassembly, and note these items:
  - When reassembling the deck (O), reinsert the deck fixing springs (P) correctly.
  - When installing the terminal board box cover (G), check for gasket integrity and efficiency.



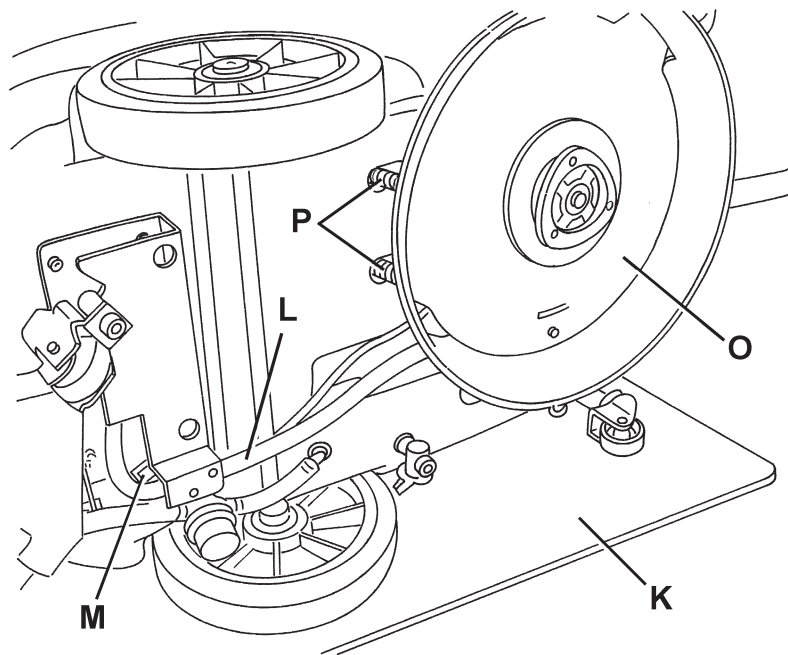
S301369C

OTHER SYSTEMS

BRUSH/PAD-HOLDER DECK DISASSEMBLY/ASSEMBLY [Vantage 17 Cable] (continues)



S301377



S301222

## ELECTRICAL SYSTEM

### ELECTRICAL SYSTEM

#### (WET OR GEL) BATTERY REMOVAL/INSTALLATION AND SETTING [Vantage 17 Battery]

##### Disassembly

1. Check that the switches (5 and 6) are turned to "0".
2. If there is recovery water in the tank (43), drain it through the hose (22).
3. Disconnect the vacuum hose (29) from the squeegee (17).
4. Open the cover (12) and apply the cover stand (60).
5. Grasp the recovery water tank (A) in the area (B) and lift it, as shown in the figure, then disconnect the vacuum hose (C) from the tank and remove the tank (A) together with the hoses (D) and (E).
6. Disconnect the battery terminals (50).
7. Remove the batteries (50).

##### Setting (WET or GEL) before installation

8. If the type of battery chosen to be installed is different from the removed one (not WET but GEL, or viceversa), before installing and connecting the new batteries, the machine electronic board setting must be performed according to the following procedure.
9. Remove the screws (F) and carefully pull out the electrical component box cover (G).
10. Set the microswitch (H) to WET or GEL position according to the type of battery that is to be installed.



##### WARNING!

*Do not move the adjacent switch (I).*

11. Reinstall the electrical component box cover (G) and tighten the screws (F).

##### Battery assembly

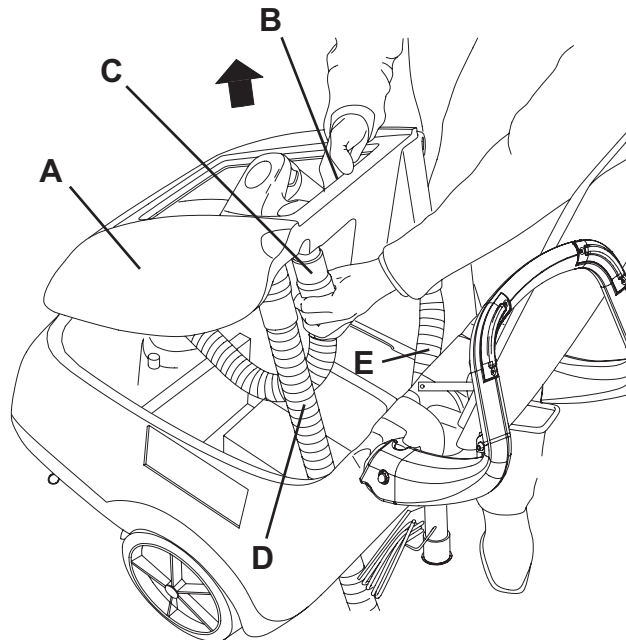
12. Once the setting is performed, install the batteries on the machine according to the diagram (51).
13. Connect the battery terminals (50).

##### Battery charger

14. Charge the batteries.

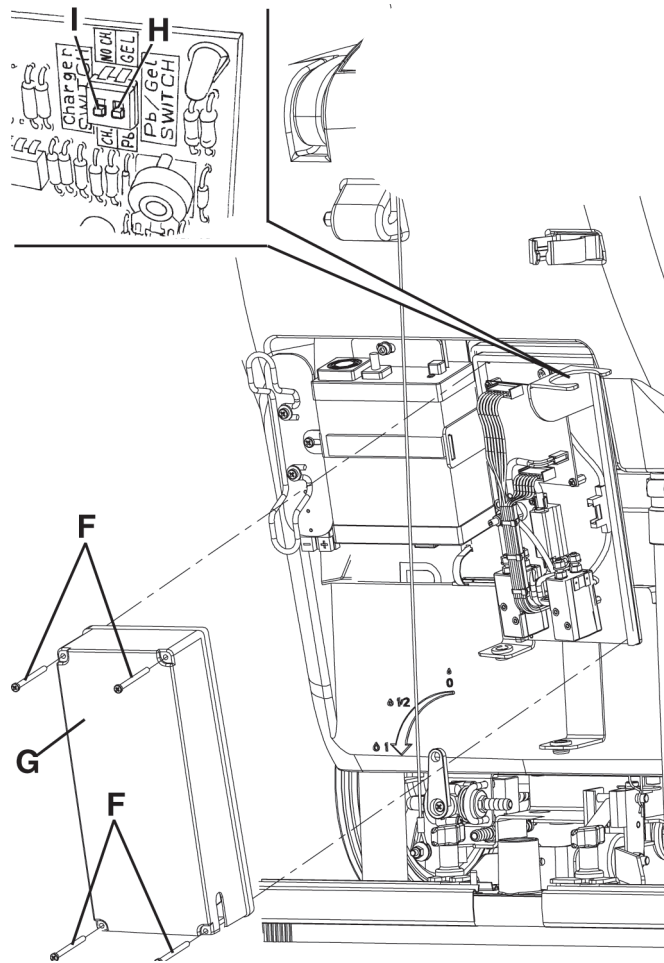
##### Reset

15. Carry out steps from 3 to 5 in the reverse order.



S301369C

## ELECTRICAL SYSTEM

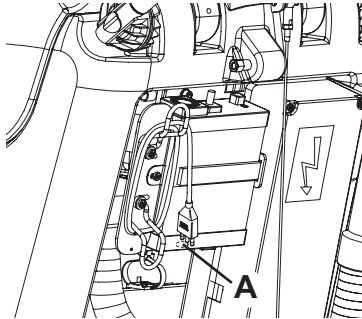
**(WET OR GEL) BATTERY REMOVAL/INSTALLATION AND SETTING [Vantage 17 Battery]**  
(continues)

S301378

# ELECTRICAL SYSTEM

## CHARGING CURVES SETTING [Vantage 17 Battery] (for machines after 2007/06)

1. Remove the plastic cap (A) in order to access to the internal DIP SWITCH.
2. With a small screwdriver change the DIP SWICH in accordance with the below listed setting data.
  - For batteries until 55Ah@5h leave the standard charging curve = 8A.
  - For batteries over 55Ah@5h set the charging curve = 9A.
  - For GEL batteries leave the standard curve GEL.
  - For WET batteries, set the curve WET



DIP SWITCH SW1 SETTINGS	
DP1	DP2
Charging curve	Voltage
<b>ON = WET</b>	<b>ON = 9A</b>
<b>OFF = GEL</b>	<b>OFF = 8A</b>

S301223A

## ELECTRONIC BOARD SETTING [Vantage 17 Battery]

### Pb/Gel dip-switch (A)

1	Pb	Pb Batteries
0	Gel	Gel Batteries

V toll.: ± 0,1V		
	wet	gel
green-> yellow	21	22,3
yellow -> red (blinking)	20,3	21

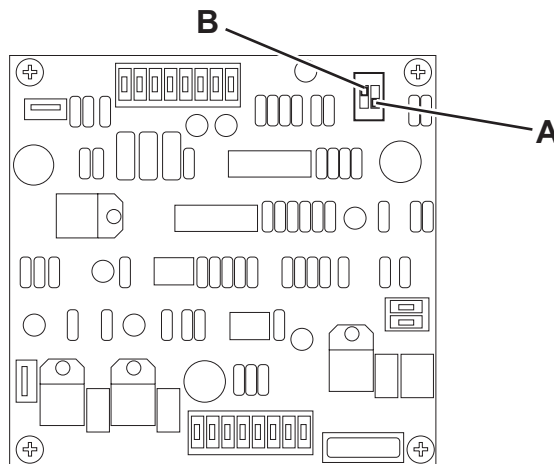
### On board charger / NO charger dip-switch (B)

1	NO Ch	For external charger use
0	Ch	For machine with SPE battery charger connected.



**WARNING:**

*The SPE on board charger must be connected to the batteries + pole and to the CH faston to provide 24V power input to the electronic board: in case of removing of the charger for servicing, set the dip switch on "NO Ch" in order to work with the machine without the charger installed.*



S301223B



**ELECTRICAL SYSTEM****BATTERY CHARGING [Vantage 17 Battery]****NOTE**

*Charge the batteries when the warning light (3) or (4) turns on, or when finishing cleaning.  
Keeping the batteries charged makes them last longer.*

**CAUTION!**

*When the batteries are discharged, charge them as soon as possible, as that condition makes them last shorter.*

*Check for battery charge at least once a week.*

**WARNING!**

*When using lead (WET) batteries, battery charging produces highly explosive hydrogen gas. Charge the batteries in well-ventilated areas and away from open flames.*

*Do not smoke while charging this type of batteries.*

*During the charging of this type of batteries, the recovery water tank (A) must be removed.*

**WARNING!**

*When using lead (WET) batteries, be extremely careful while charging the batteries as there may be battery fluid leakages. The battery fluid is corrosive. If it comes in contact with the skin or eyes, rinse thoroughly with water and consult a physician.*

**CAUTION!**

*Batteries must be charged indoors, in a dry environment (damp free).*

**Preliminary procedures**

1. Drive the machine on a level ground.
2. Check that the switches (5 and 6) are turned to "0".
3. If there is recovery water in the tank (43), drain it through the hose (22).
4. For lead (WET) batteries only:
  - Disconnect the vacuum hose (29) from the squeegee (17).
  - Open the cover (12).
  - Grasp the recovery water tank (A) in the area (B) and lift it, as shown in the figure, then disconnect the vacuum hose (C) from the tank and remove the tank (A) together with the hoses (D) and (E).
  - Check for the correct level of electrolyte inside the batteries (50). If necessary, add distilled water through the caps.
  - Leave all the battery caps open for next charging.
  - If necessary, clean the upper surface of the batteries.
5. Charge the batteries according to one of the following procedures, depending on the presence of the battery charger (33).

## ELECTRICAL SYSTEM

### BATTERY CHARGING [Vantage 17 Battery] (continues)

#### Battery charging with battery charger installed on the machine

11. Connect the battery charger cable (27) to the electrical mains (the mains voltage and frequency must be compatible with the battery charger values: see the battery charger Manual).

**NOTE**

*When the battery charger is connected to the electrical mains, all machine functions are automatically cut off. The green warning light (34) flashes when the battery charger is charging the batteries.*

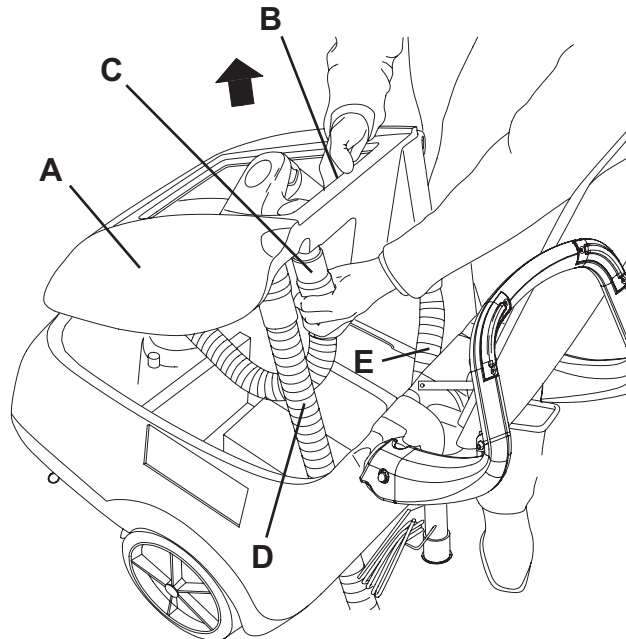
12. When the green warning light (34) stays on, the battery charging cycle is over.
13. When the battery charging is over, disconnect the battery charger cable (27) from the electrical mains and wind it round its housing on the machine.

**NOTE**

*For further information about the battery charger operation (33), see the relevant Manual.*

#### Reset

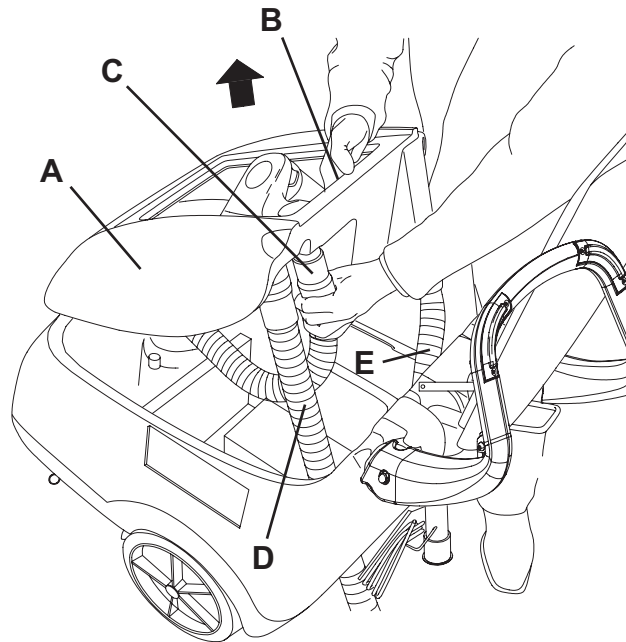
14. For lead (WET) batteries only:
  - Check for the correct level of electrolyte inside the batteries (50). If necessary, add distilled water through the caps.
  - Close all the battery caps.
  - If necessary, clean the upper surface of the batteries.
  - Grasp the recovery water tank (A) in the area (C) and lay it on the machine as shown in the figure, then connect the vacuum hose (C) to the tank, and bring it back to its original position.
  - Connect the vacuum hose (29) to the squeegee (17).
  - Close the cover (12).
15. Now the machine is ready to be used.



S301369C

**ELECTRICAL SYSTEM****ELECTRONIC BOARD REPLACEMENT [Vantage 17 Battery]**

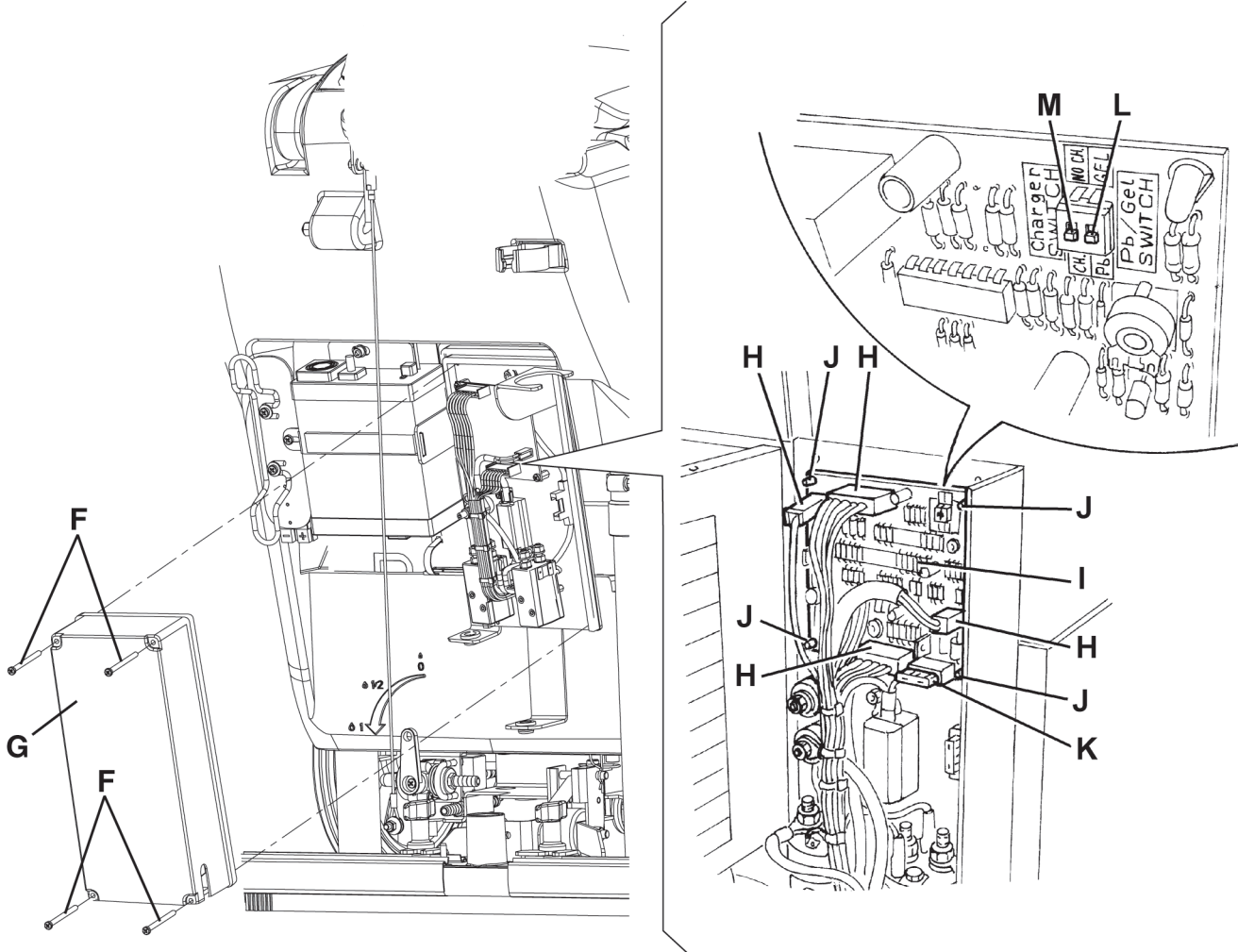
1. Check that the switches (5 and 6) are turned to "0".
2. Remove the recovery water tank and disconnect the battery negative terminal (50) according to the following procedure:
  - If there is recovery water in the tank (43), drain it through the hose (22).
  - Disconnect the vacuum hose (29) from the squeegee (17).
  - Open the cover (12) and apply the cover stand (60).
  - Grasp the recovery water tank (A) in the area (B) and lift it, as shown in the figure, then disconnect the vacuum hose (C) from the tank and remove the tank (A) together with the hoses (D) and (E).
3. Remove the screws (F) and carefully pull out the electrical component box cover (G).
4. Disconnect the connections (H) of the electronic board (I).
5. Disengage the fasteners (J) and remove the electronic board (I).
6. Assemble in the reverse order of disassembly, and note these items:
  - Be sure that the electronic board/solenoid valve fuse (K) is installed.
  - Set the switch (L) for the battery type (WET or GEL) and the switch (M) for the battery charger (33) in the same position as for the replaced board.



S301369C

# ELECTRICAL SYSTEM

## ELECTRONIC BOARD REPLACEMENT [Vantage 17 Battery] (continues)

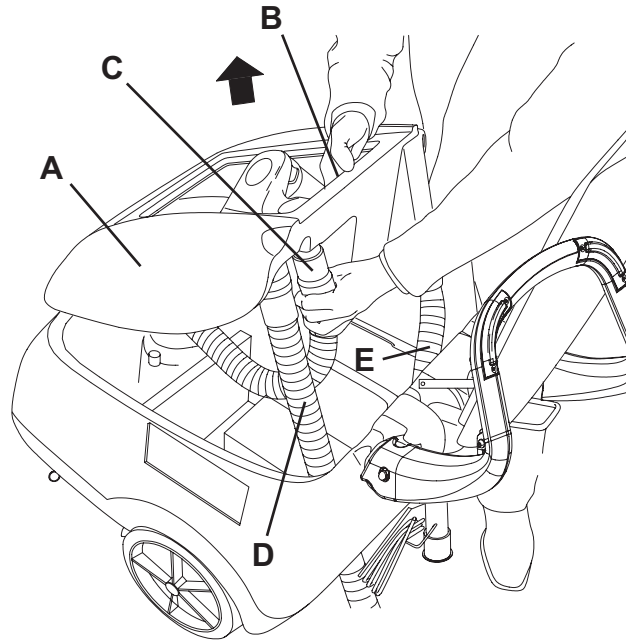


S301379

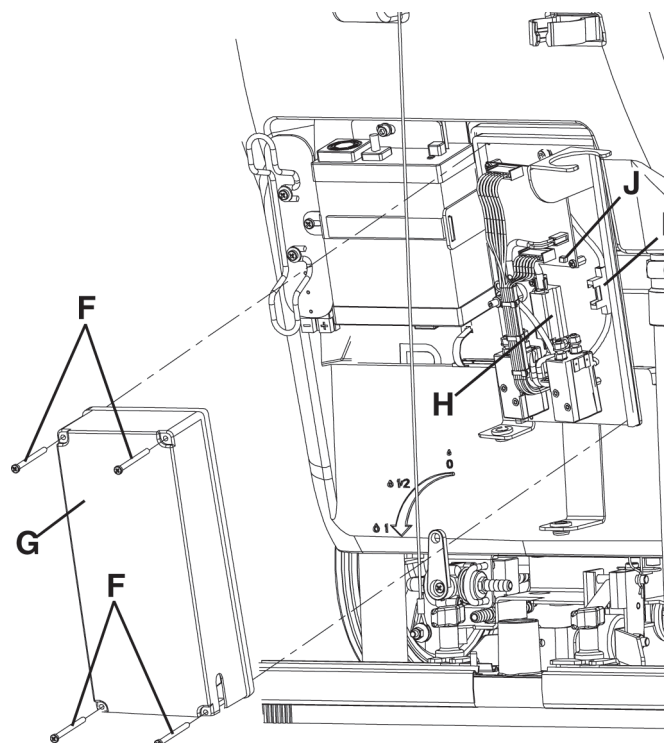
## ELECTRICAL SYSTEM

## FUSE CHECK/REPLACEMENT [Vantage 17 Battery]

1. Check that the switches (5 and 6) are turned to "0".
2. Remove the recovery water tank and disconnect the battery negative terminal (50) according to the following procedure:
  - If there is recovery water in the tank (43), drain it through the hose (22).
  - Disconnect the vacuum hose (29) from the squeegee (17).
  - Open the cover (12) and apply the cover stand (60).
  - Grasp the recovery water tank (A) in the area (B) and lift it, as shown in the figure, then disconnect the vacuum hose (C) from the tank and remove the tank (A) together with the hoses (D) and (E).
3. Remove the screws (F) and carefully pull out the electrical component box cover (G).
4. Check/replace the fuses:
  - Brush fuse (H): 40 A
  - Vacuum system fuse (I): 30 A
  - Solenoid valve and electronic board fuse (J): 5 A
5. Assemble in the reverse order of disassembly.



S301369C



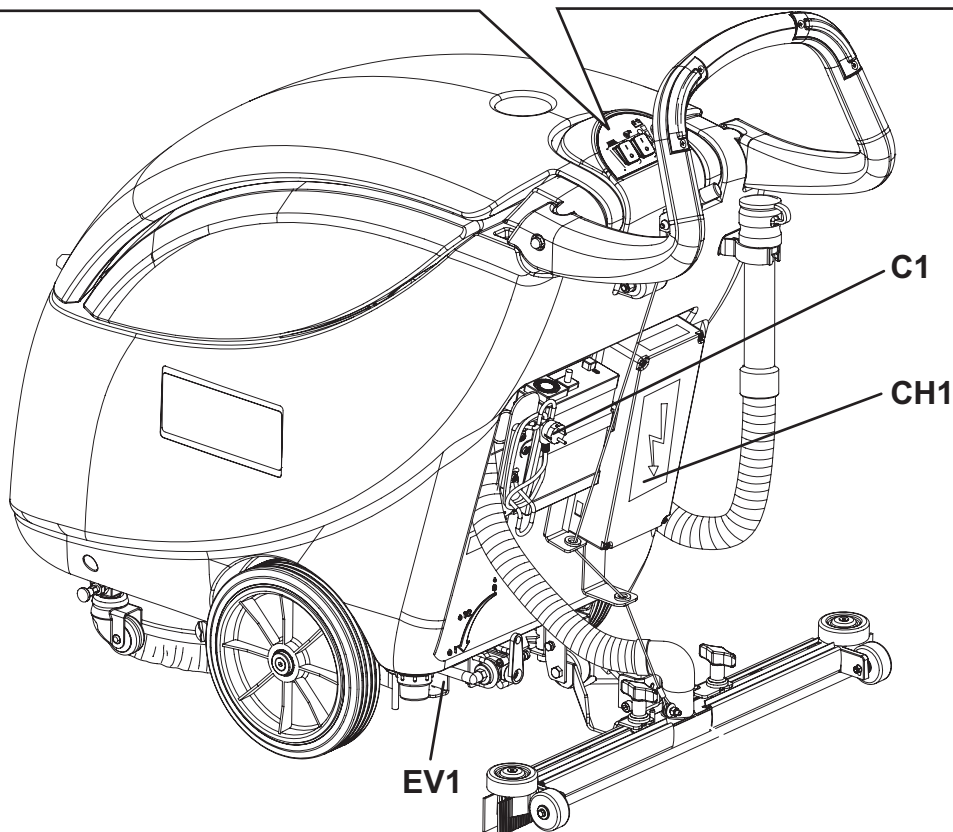
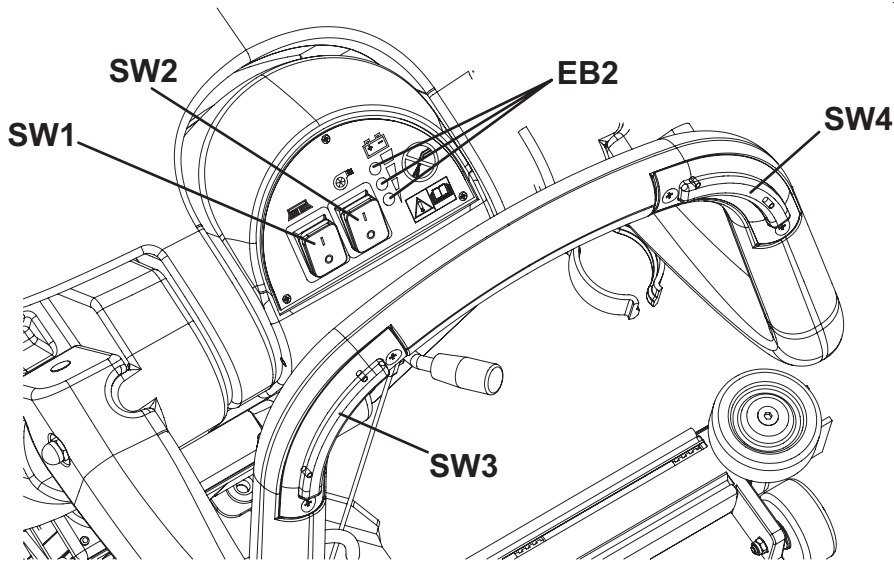
S301380

# ELECTRICAL SYSTEM

## COMPONENT LOCATION [Vantage 17 Battery]

CH1	Battery charger
C1	Battery charger connector
EB1	Electronic board (CF BA430)
EB2	Electronic board led (CF BALED)
ES1	Brush switch
ES2	Vacuum switch
EV1	Water solenoid valve
F1	Brush fuse (40A)
F2	Vacuum system fuse (30A)

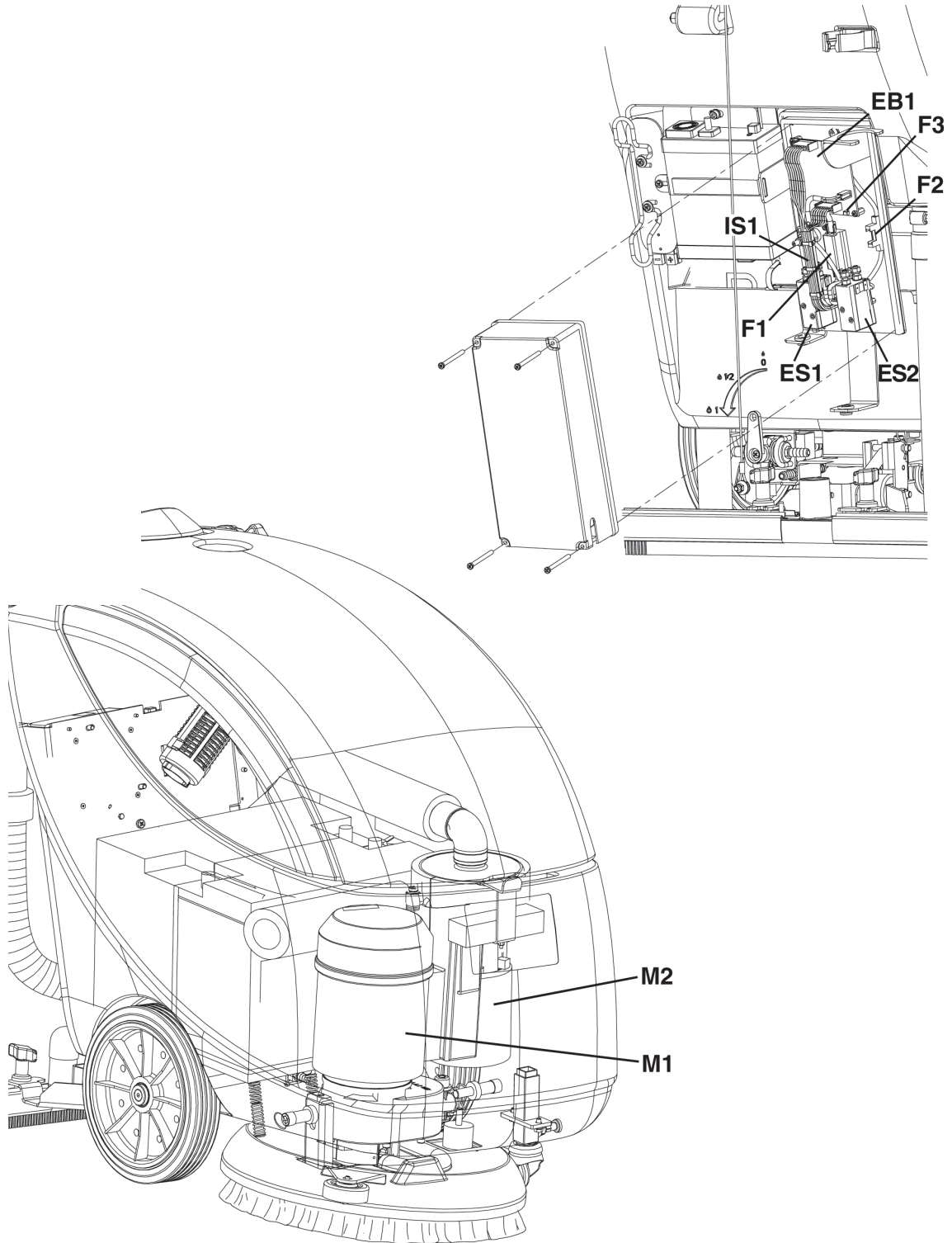
F3	Solenoid valve and electronic board fuse (5A)
IS1	Negative insulator
M1	Brush/pad motor
M2	Vacuum system motor
SW1	Brush/pad switch
SW2	Vacuum switch
SW3	Right handle brush switch
SW4	Left handle brush switch



S301391C

**ELECTRICAL SYSTEM**

**COMPONENT LOCATION [Vantage 17 Battery] (continues)**



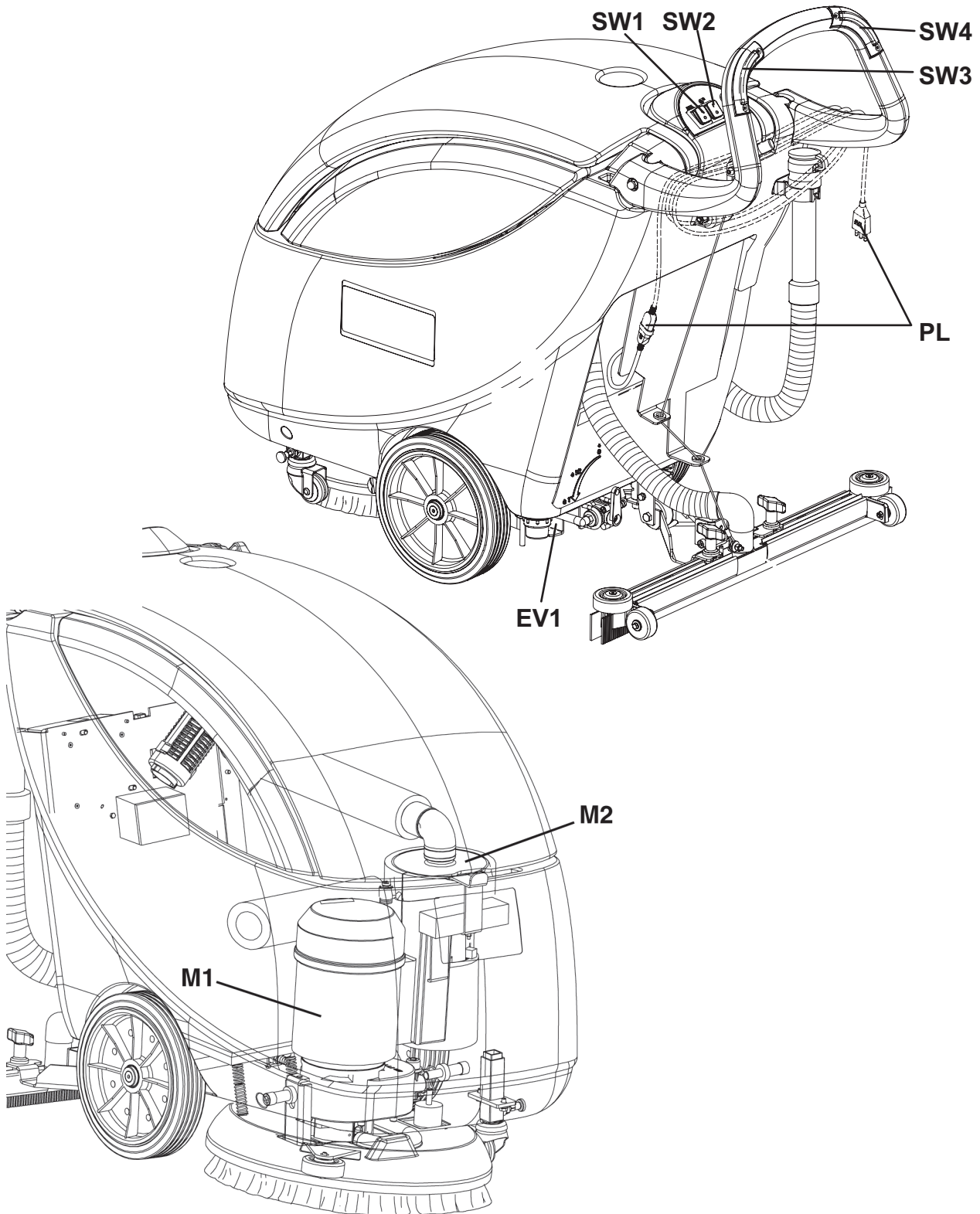
S301392

# ELECTRICAL SYSTEM

## COMPONENT LOCATION [Vantage 17 Cable]

EV1	Solenoid valve
FR	Frame
M1	Brush/pad motor
M2	Vacuum system motor
PL	Plug

SW1	Brush/pad switch
SW2	Vacuum switch
SW3	Right handle brush switch
SW4	Left handle brush switch



S301393



**ELECTRICAL SYSTEM****WIRING DIAGRAM [Vantage 17 Battery] (for machines before 2007/06)****Key:**

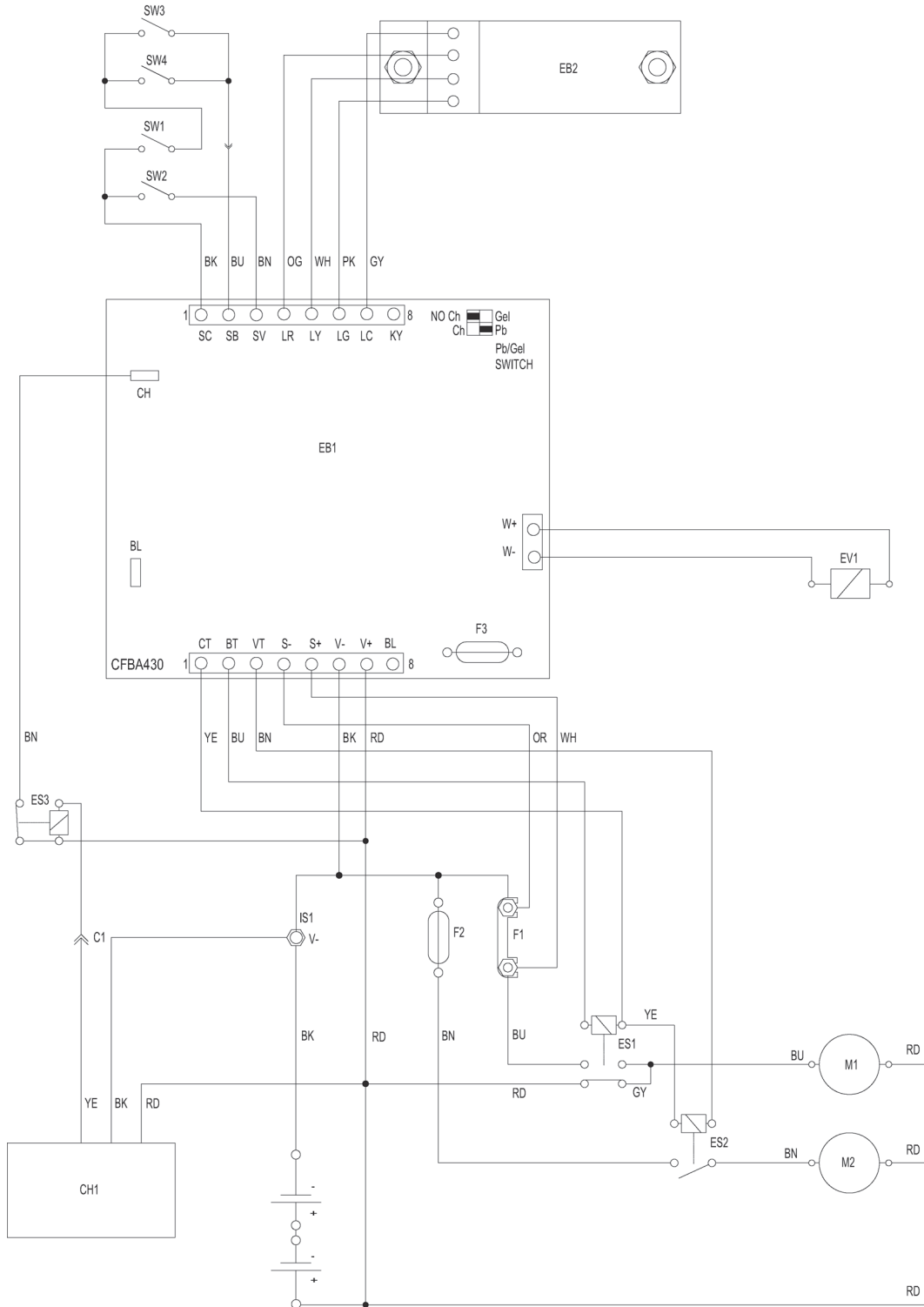
CH1	Battery charger
C1	Battery charger connector
EB1	Electronic board
EB2	Electronic board LED (CF BALED)
ES1	Brush switch
ES2	Vacuum switch
ES3	Battery charger relay
EV1	Water solenoid valve
F1	Brush fuse (40A)
F2	Vacuum system fuse (30A)
F3	Solenoid valve and electronic board fuse (5A)
IS1	Negative insulator
M1	Brush/pad motor
M2	Vacuum system motor
SW1	Brush/pad switch
SW2	Vacuum switch
SW3	Right handle brush switch
SW4	Left handle brush switch

**Color code:**

BK	Black
BU	Blue
BN	Brown
GN	Green
GY	Grey
OG	Orange
PK	Pink
RD	Red
VT	Violet
WH	White
YE	Yellow

# ELECTRICAL SYSTEM

## WIRING DIAGRAM [Vantage 17 Battery] (for machines before 2007/06) (continues)



S301229

**ELECTRICAL SYSTEM****WIRING DIAGRAM [Vantage 17 Battery] (for machines after 2007/06)****Key:**

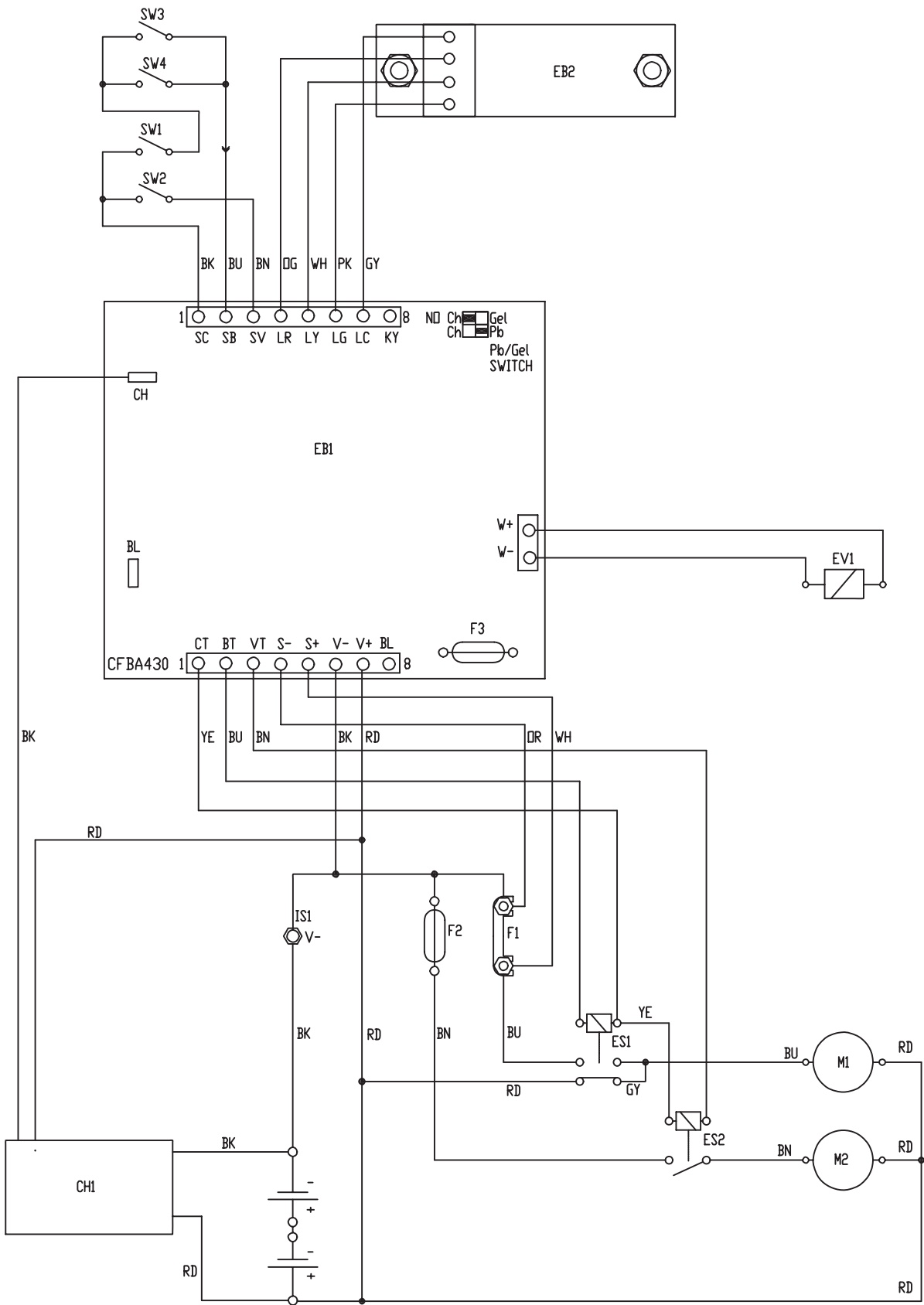
CH1	Battery charger
C1	Battery charger connector
EB1	Electronic board
EB2	Electronic board LED (CF BALED)
ES1	Brush switch
ES2	Vacuum switch
EV1	Water solenoid valve
F1	Brush fuse (40A)
F2	Vacuum system fuse (30A)
F3	Solenoid valve and electronic board fuse (5A)
IS1	Negative insulator
M1	Brush/pad motor
M2	Vacuum system motor
SW1	Brush/pad switch
SW2	Vacuum switch
SW3	Right handle brush switch
SW4	Left handle brush switch

**Color code:**

BK	Black
BU	Blue
BN	Brown
GN	Green
GY	Grey
OG	Orange
PK	Pink
RD	Red
VT	Violet
WH	White
YE	Yellow

# ELECTRICAL SYSTEM

## WIRING DIAGRAM [Vantage 17 Battery] (for machines after 2007/06) (continues)



S301229A

# ELECTRICAL SYSTEM

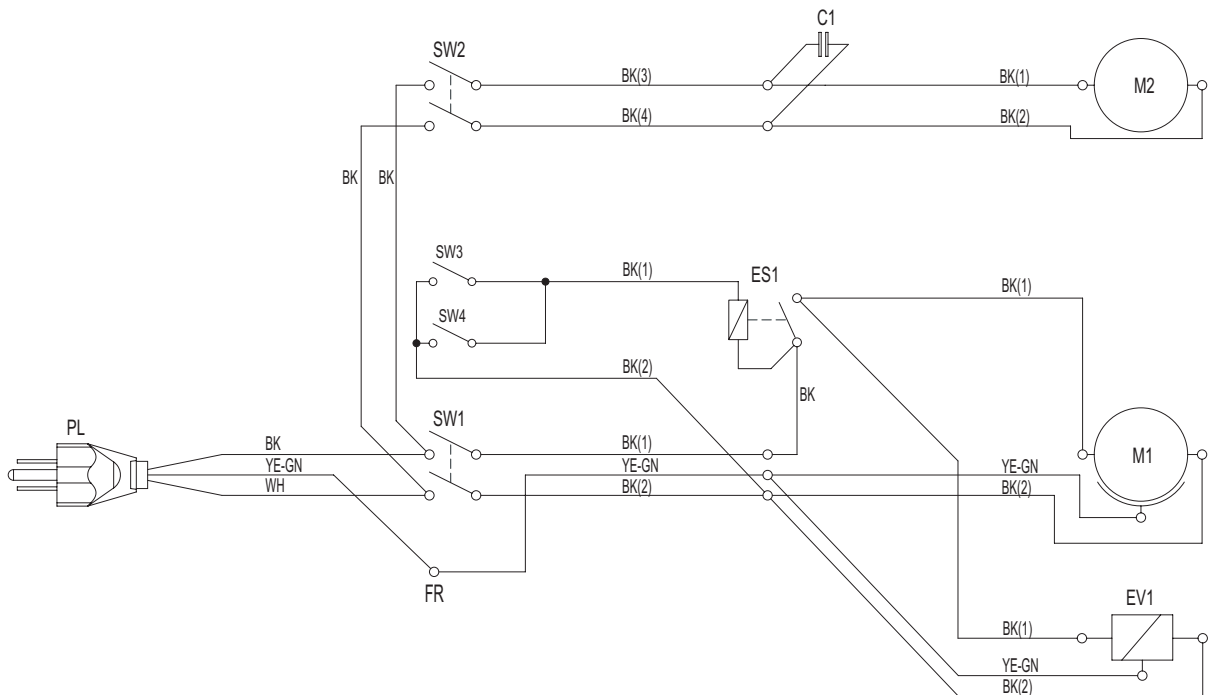
## WIRING DIAGRAM [Vantage 17 Cable]

### Key:

EV1	Solenoid valve
FR	Frame
M1	Brush/pad motor
M2	Vacuum system motor
PL	Plug
SW1	Brush/pad switch
SW2	Vacuum switch
SW3	Right handle brush switch
SW4	Left handle brush switch

### Color code:

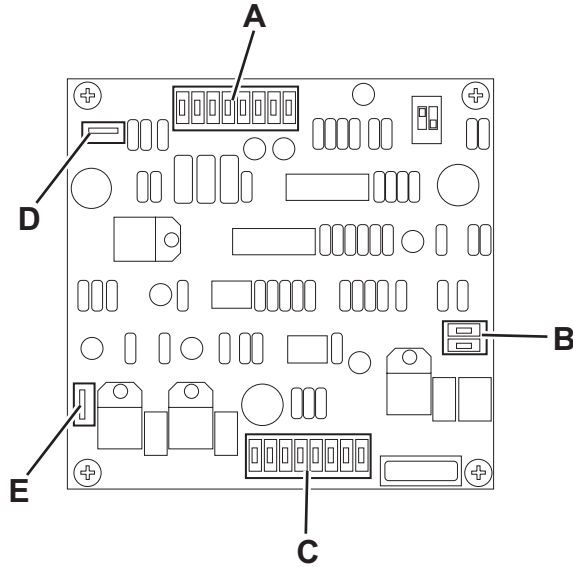
BK	Black
BU	Blue
BN	Brown
GN	Green
GY	Grey
OG	Orange
PK	Pink
RD	Red
VT	Violet
WH	White
YE	Yellow



S301230

# ELECTRICAL SYSTEM

## EB1 ELECTRONIC BOARD CONNECTIONS [Vantage 17 Battery]



S301223C

**Work conditions:**

- A. Brush switched OFF, Vacuum switched OFF
- B. Brush switched ON, Vacuum switched OFF
- C. Brush switched OFF, Vacuum switched ON

EB1 UPPER 8 WAYS MODU1 CONNECTOR (A)					
PIN		Description	Work conditions		
			A	B	C
1	CS	Common Switch	24V	24V	24V
2	BS	Brush Switch	floating	24V	floating
3	VS	Vacuum Switch	floating	floating	24V
4	LR	Red LED (<=> EB2 PIN 2)	floating	dep. on battery status	
5	LG	Yellow LED (<=> EB2 PIN 3)	floating	dep. on battery status	
6	LV	Green LED (<=> EB2 PIN 4)	floating	dep. on battery status	
7	LC	LED Common (<=> EB2 PIN 1)	24V	24V	24V
8	KY	not used	24V	24V	24V

EB1 2 WAYS MODU1 CONNECTOR (B)					
PIN		Description	Work conditions		
			A	B	C
1	W+	+ Electrovalve	24V	24V	24V
2	W-	- Electrovalve	floating	0V	floating

**ELECTRICAL SYSTEM****EB1 ELECTRONIC BOARD CONNECTIONS [Vantage 17 Battery] (continues)**

EB1 LOWER 8 WAYS MODU1 CONNECTOR (C)					
PIN		Description	Work conditions		
			A	B	C
1	CT	Electrom. switches common	24V	24V	24V
2	BT	Brush Electrom. Switch	floating	0V	floating
3	VT	Vacuum Electrom. Switch	floating	floating	0V
4	S-	- shunt	0V	0V	0V
5	S+	+ shunt	0V	<40mV (**)	0V
6	V-	Power	0V	0V	0V
7	V+	Power	24V	24V	24V
8	BL	Not used	floating (*)	floating	floating

- (\*) Depending on charger connection to the mains: only with charger switched ON => 0V (high res.) for red LED cathode.  
 (\*\*) > 40mV is considered brush motor overload by the board: it starts blinking LEDs on the control panel and it cuts off the motor after a time relating to the overload misurement.

EB1 FASTONS (D - E)					
PIN		Description	Work conditions		
			A	B	C
CH	6,3	Power from charger	24V (*)	24V (*)	24V (*)
BL	4,8	not used	floating (**)	floating	floating

- (\*) Depending on charger connection to the mains: only with charger switched OFF => 24V  
 (\*\*) Depending on charger connection to the mains: only with charger switched ON => signal for red LED cathode.





# CLARKE PRODUCT SUPPORT BRANCHES

## U. S. A. Locations

### PRODUCTION FACILITIES

**Clarke®**, Springdale, Arkansas  
2100 Highway 265  
Springdale, Arkansas 72764  
(479) 750-1000  
**Customer Service - 1-800-253-0367**  
**Technical Service - 1-800-356-7274**

**American Lincoln®**, Bowling Green, Ohio 43402  
1100 Haskins Road

### SERVICE FACILITIES

**Clarke®**, Elk Grove, Illinois 60007  
2280 Elmhurst Road  
(847) 956-7900

**Clarke®**, Denver, Colorado 80204  
1955 West 13th Ave.  
(303) 623-4367

**Clarke®**, Houston, Texas 77040  
7215 North Gessner Road  
713-937-7717

### SERVICE AND SALES FACILITY

**American Lincoln® / Clarke**, Madison Heights,  
Michigan 48071-0158  
29815 John R.  
(810) 544-6300

**American Lincoln® / Clarke**, Marietta, Georgia 30066  
1455 Canton Road  
(770) 973-5225

**Clarke®**

**Clarke American Sanders**

**A.L. Cook**

**Customer Service Headquarters and Factory**  
2100 Highway 265  
Springdale, Arkansas 72764  
(479) 750-1000

**Technical Service**  
1-800-356-7274

## European Locations

### PRODUCTION FACILITIES

ALTO Danmark A/S, Aalborg  
Blytaekervej 2  
DK-9000 Aalborg  
+45 72 18 21 00

ALTO Danmark A/S, Hadsund  
Industrivarteret  
DK-9560 Hadsund  
+45 72 18 21 00

### SALES SUBSIDIARIES

ALTO US - Canada, Ontario (Canada)  
4080 B Sladeview Crescent Unit 1  
Mississauga, Ontario L5L 5Y5  
(905) 569 0266

ALTO Overseas Inc., Sydney (Australia)  
1B/8 Resolution Drive  
Caringbah NSW 2229  
+61 2 9524 6122

ALTO Cleaning Systems Asia Pte Ltd., Singapore  
No. 17 Link Road  
Singapore 619034  
+65 268 1006

ALTO Deutschland GmbH, Bellenberg (Germany)  
Guido-Oberdorfer-Straße 2-8  
89287 Bellenberg  
+49 0180 5 37 37 37

ALTO Cleaning Systems (UK) Ltd., Penrith  
Gilwilly Industrial Estate  
Penrith  
Cumbria CA11 9BN  
+44 1768 868 995

ALTO France S.A. Strasbourg  
B.P. 44, 4 Place d'Ostwald  
F-67036 Strasbourg  
Cedex 2  
+33 3 8828 8400

ALTO Nederland B.V.  
Postbus 65  
3370 AB Hardinxveld-Giessendam  
The Netherlands  
+31 184 677 200

ALTO Sverige AB, Molndal (Sweden)  
Aminogatan 18  
Box 4029  
S-431 04 Molndal  
+46 31 706 73 00

ALTO Norge A/S, Oslo (Norway)  
Bjornerudveien 24  
N-1266  
+47 2275 1770

## **Clarke® LIMITED U.S. WARRANTY**

This Clarke Product is warranted to be free from defects in materials and workmanship under normal use and service, when operated and maintained in accordance with Clarke's Maintenance and Operations instructions. The warranty period is subject to the conditions stated below.

### **3 YEARS FOR PARTS AND 1 YEAR FOR SERVICE LABOR (See exceptions below)**

Motors must be inspected for carbon motor brush wear at six-month intervals by an authorized Clarke repair station. Failure to comply with the six-month inspection requirement or failure to replace worn motor brushes identified during the inspection will void the warranty on the motors. Cost of the six-month inspection and replacement of carbon motor brushes is the responsibility of the purchaser. In the event of a warranty claim on the motors, proof of inspection and any required motor brush replacement must be provided. This warranty is extended only to the original purchaser for use of the product. It does not cover normal wear parts such as electrical cable, rubber parts, hoses and motor brushes.

### **BATTERY WARRANTY**

In addition to the items above, any original equipment Clarke Battery which becomes unserviceable under normal use within a period of ninety (90) days from date of sale to the original user will be repaired or replaced with one of equal specification at our option, F.O.B. any authorized Clarke Sales or Service Branch, with no charge to the user, except transportation costs. After expiration of the above ninety (90) day period, any battery which fails under normal use will be adjusted to the original user with a new battery of equal specification on an eighteen (18) months pro rate basis from the date of purchase. Adjustment will be determined using the then current list price, plus transportation costs.

Warranty is rendered null and void if battery is not kept filled to the proper level with DISTILLED WATER.

### **Clarke: POLYDUR® AUTOMATIC SCRUBBER SOLUTION AND RECOVERY TANK EIGHT-YEAR U.S. GUARANTEE**

Your new Clarke machine has polydur Solution and Recovery Tanks. Polydur is a rotationally molded, low-density linear polyethylene that won't crack or dent, and withstands most corrosives and temperature extremes. Clarke backs up your Polydur tanks with an eight-year guarantee. If a tank breaks or leaks under normal use within eight years of the date of purchase, it will be replaced free.

### **STATED WARRANTIES ARE IN LIEU OF ALL OTHER WARRANTIES, EXPRESSED OR IMPLIED**

Clarke's liability under this warranty is limited to repair of the product and/or replacement of parts and is given to purchaser in lieu of all other remedies, including INCIDENTAL AND CONSEQUENTIAL DAMAGES.

THERE ARE NO EXPRESS WARRANTIES OTHER THAN THOSE SPECIFIED HEREIN. THERE ARE NO WARRANTIES WHICH EXTEND BEYOND THE DESCRIPTION OF THE FACE HEREOF. NO WARRANTIES, INCLUDING BUT NOT LIMITED TO WARRANTY OF MERCHANTABILITY, SHALL BE IMPLIED. A warranty registration card is provided with your Clarke product. Return the card to assist Clarke in providing the performance you expect from your new floor machine.

If a difficulty develops with the product, you should: a) Contact the nearest authorized Clarke repair location or contact the Clarke Service Operations Department, 2100 Highway 265, Springdale, Arkansas 72764, for the nearest authorized Clarke repair location. Only these locations are authorized to make repairs to the product under this warranty. (b) Return the product to the nearest Clarke repair location. Transportation charges to and from the repair location must be prepaid by the purchaser. Clarke will repair the product and/or replace any defective parts with out charge within a reasonable time after receipt of the product.

Clarke, 2100 Highway 265, Springdale, Arkansas 72764.

**Clarke reserves the right to make changes or improvements to its machine without notice.  
Always use genuine Clarke Parts for repair.**

# **Clarke®**

**2100 Highway 265  
Springdale, Arkansas, 72764**